



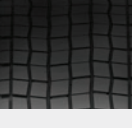





THE SMART MONEY IS ON



TRUCK TIRE DATA AND REFERENCE BOOK

PAGE	PRODUCT	IMAGE	APPLICATIONS/BENEFITS	COMPETITORS
4	FR610 <i>OptiGreen Series</i>		 	<ul style="list-style-type: none"> • Bridgestone R283A Ecopia • Goodyear Fuel Max, 399A Fuel Max • Michelin X Line Energy Z, XZA3+ Evertread • Continental EcoPlus HS3, Hybrid HS3 • Yokohama 101ZL Spec2 RY617
4	FR605 <i>OptiGreen Series</i>		 	<ul style="list-style-type: none"> • Bridgestone R283A Ecopia • Goodyear Fuel Max, 399A Fuel Max • Michelin X Line Energy Z, XZA3+ Evertread • Continental EcoPlus HS3, Hybrid HS3 • Yokohama 101ZL Spec2 RY617
5	RR680		 	<ul style="list-style-type: none"> • Bridgestone R268 Ecopia, R250ED • Goodyear Fuel Max RSA, Endurance RSA • Michelin X Multi Energy Z, XZE2 • Continental HSR2, CrossTrac HA3, Hybrid HS3 • Yokohama 104ZR, 104ZR Spec-2, RY023
5	RT600		 	<ul style="list-style-type: none"> • Bridgestone R238, R268 Ecopia • Goodyear Endurance RSA, G661 HSA ULT, G647 RSS • Michelin XZE • Continental HSR, Hybrid HS3, HSR2 • Yokohama RY023, 104ZR
6	RR150			<ul style="list-style-type: none"> • Bridgestone R250ED, R196 • Goodyear G619RST • Michelin XTE • Continental HTR2 • Yokohama RY103
6	RR300			<ul style="list-style-type: none"> • Bridgestone R283A Ecopia • Goodyear Fuel Max, 399A Fuel Max • Michelin X Line Energy Z, XZA3+ Evertread • Continental EcoPlus HS3, Hybrid HS3 • Yokohama 101ZL Swpec2, RY617
7	RT606+			<ul style="list-style-type: none"> • Bridgestone R268 Ecopia, R250ED • Goodyear Fuel Max RSA, Endurance RSA • Michelin XZE2, X Multi Energy Z • Continental HSR2, CrossTrac HA3, Hybrid HS3 • Yokohama RY023, 104ZR
8	FD405 <i>OptiGreen Series</i>		 	<ul style="list-style-type: none"> • Bridgestone M710 Ecopia, M760 Ecopia • Goodyear G505D, G572A, G572 1AD • Michelin X Line Energy D, XDA Energy • Continental HDL EcoPlus, Eco Plus HD3 • Yokohama 703ZL, TY517
8	FD425 <i>OptiGreen Series</i>		 	<ul style="list-style-type: none"> • Michelin X One Line Energy D, X One XDN2 • Goodyear 392A SSD • Bridgestone Greatec M835 Ecopia • Continental HDL2 EcoPlus • Yokohama 902L UWB, TY517 UWB
9	RLB400		 	<ul style="list-style-type: none"> • Bridgestone M726 ELA, M726 EL • Goodyear G572A, G622 RSD • Michelin XDA5+, XDN2, X Multi Energy D • Continental HDL Eco Plus, HDL2, HDL2 DL, HDL2 DL • Yokohama 703ZL, TY577, TY517, TY517 MC2
9	RLB490			<ul style="list-style-type: none"> • Bridgestone M724F • Goodyear G622 RSD, G622 RSD ULT • Michelin XDS2, XD2 • Continental HDR, Hybrid HD3 • Yokohama TY303, TY287

4

FR610
OptiGreen Series



- Bridgestone R283A Ecopia
- Goodyear Fuel Max, 399A Fuel Max
- Michelin X Line Energy Z, XZA3+ Evertread
- Continental EcoPlus HS3, Hybrid HS3
- Yokohama 101ZL Spec2 RY617

4

FR605
OptiGreen Series



- Bridgestone R283A Ecopia
- Goodyear Fuel Max, 399A Fuel Max
- Michelin X Line Energy Z, XZA3+ Evertread
- Continental EcoPlus HS3, Hybrid HS3
- Yokohama 101ZL Spec2 RY617

5

RR680



- Bridgestone R268 Ecopia, R250ED
- Goodyear Fuel Max RSA, Endurance RSA
- Michelin X Multi Energy Z, XZE2
- Continental HSR2, CrossTrac HA3, Hybrid HS3
- Yokohama 104ZR, 104ZR Spec-2, RY023

5

RT600



- Bridgestone R238, R268 Ecopia
- Goodyear Endurance RSA, G661 HSA ULT, G647 RSS
- Michelin XZE
- Continental HSR, Hybrid HS3, HSR2
- Yokohama RY023, 104ZR

6

RR150



- Bridgestone R250ED, R196
- Goodyear G619RST
- Michelin XTE
- Continental HTR2
- Yokohama RY103

6

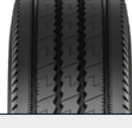
RR300



- Bridgestone R283A Ecopia
- Goodyear Fuel Max, 399A Fuel Max
- Michelin X Line Energy Z, XZA3+ Evertread
- Continental EcoPlus HS3, Hybrid HS3
- Yokohama 101ZL Swpec2, RY617

7

RT606+



- Bridgestone R268 Ecopia, R250ED
- Goodyear Fuel Max RSA, Endurance RSA
- Michelin XZE2, X Multi Energy Z
- Continental HSR2, CrossTrac HA3, Hybrid HS3
- Yokohama RY023, 104ZR

8

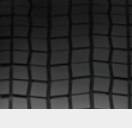
FD405
OptiGreen Series



- Bridgestone M710 Ecopia, M760 Ecopia
- Goodyear G505D, G572A, G572 1AD
- Michelin X Line Energy D, XDA Energy
- Continental HDL EcoPlus, Eco Plus HD3
- Yokohama 703ZL, TY517

8

FD425
OptiGreen Series



- Michelin X One Line Energy D, X One XDN2
- Goodyear 392A SSD
- Bridgestone Greatec M835 Ecopia
- Continental HDL2 EcoPlus
- Yokohama 902L UWB, TY517 UWB

9

RLB400



- Bridgestone M726 ELA, M726 EL
- Goodyear G572A, G622 RSD
- Michelin XDA5+, XDN2, X Multi Energy D
- Continental HDL Eco Plus, HDL2, HDL2 DL, HDL2 DL
- Yokohama 703ZL, TY577, TY517, TY517 MC2

9

RLB490



- Bridgestone M724F
- Goodyear G622 RSD, G622 RSD ULT
- Michelin XDS2, XD2
- Continental HDR, Hybrid HD3
- Yokohama TY303, TY287

PAGE	PRODUCT	IMAGE	APPLICATIONS/BENEFITS	COMPETITORS
10	RLB1/RLB11			<ul style="list-style-type: none"> • Bridgestone M770, M799, M729F • Goodyear G182 RSD, G182 RSD GHG • Michelin XDE M/S • Continental HDR2, HDR2 Eco Plus, • Yokohama SY767
10	RSD1			<ul style="list-style-type: none"> • Bridgestone W919, M770, M799 • Goodyear G182 RSD, G181 RSD GHG, G282 MSD • Michelin XDS, XDS2 • Continental HDW2 • Yokohama SY767, TY503 • Aeolus ADW80, ADW81
11	RLB450			<ul style="list-style-type: none"> • Bridgestone M770, M799 • Goodyear G182 RSD, G182 RSD GHG, G282 MSD • Michelin XDE M/S • Continental HDR2, HDR2 Eco Plus • Yokohama SY767
11	RSD3			<ul style="list-style-type: none"> • Bridgestone W919, M770, M799 • Goodyear G182 RSD, G181 RSD GHG, G282 MSD • Michelin XDS, XDS2 • Continental HDW2 • Yokohama SY767, TY503 • Aeolus ADW80, ADW81
12	RLB800			<ul style="list-style-type: none"> • Bridgestone L320, L317 (NHS) • Goodyear Workhorse MSD, G177 • Michelin X Works XDY, XDY3 • Continental HDC1 • Yokohama LY053
12	RLB600			<ul style="list-style-type: none"> • Bridgestone R238, R268 Ecopia • Goodyear Endurance RSA, G661 HSA ULT, G647 RSS • Michelin XZE • Continental HSR, Hybrid HS3, HSR2 • Yokohama RY023, 104ZR
13	FT105 <i>OptiGreen Series</i>			<ul style="list-style-type: none"> • Bridgestone R197 Ecopia • Goodyear Fuel Max LHT • Michelin X Line Energy T • Continental EcoPlus HT3 • Yokohama RY587
13	FT125 <i>OptiGreen Series</i>			<ul style="list-style-type: none"> • Bridgestone Greatec R135 Ecopia • Michelin X One Line Energy T, X One Multi Energy T • Goodyear 394 SST • Continental HTL1 • Yokohama RY407 UWB
14	IM105			<ul style="list-style-type: none"> • Bridgestone R197 Ecopia • Goodyear Fuel Max LHT • Michelin X Line Energy T • Continental EcoPlus HT3 • Yokohama RY587
14	RT500			<ul style="list-style-type: none"> • Bridgestone R238, R250ED • Goodyear Endurance RSA, G114 • Michelin XTA, XTE2, XZE, XTA2 Energy • Continental HTL2 Eco Plus, HTR2 • Yokohama RY023
15	TR100			<ul style="list-style-type: none"> • Bridgestone R197 Ecopia, R196 • Goodyear Fuel Max LHT • Michelin X Line Energy T • Continental Eco Plus HT3 • Yokohama RY587

DRIVE

TRAILER

COMPARISON

STEER

DRIVE

TRAILER

MIXED SERVICE

TECHNICAL

WARRANTY

PAGE	PRODUCT	IMAGE	APPLICATIONS/BENEFITS	COMPETITORS
12*	RLB800			<ul style="list-style-type: none"> • Bridgestone L320, L317 (NHS) • Goodyear Workhorse MSD, G177 • Michelin X Works XDY, XDY3 • Continental HDC1 • Yokohama LY053
12*	RLB600			<ul style="list-style-type: none"> • Bridgestone R238, R268 Ecopia • Goodyear Endurance RSA, G661 HSA ULT, G647 RSS • Michelin XZE • Continental HSR, Hybrid HS3, HSR2 • Yokohama RY023, 104ZR
16	RLB900+			<ul style="list-style-type: none"> • Bridgestone M854 • Goodyear G296 MSA • Michelin XZY3 Wide Base • Continental HTC1 • Yokohama MY507A
16	RR202			<ul style="list-style-type: none"> • Bridgestone M8843, M860A • Goodyear G751 MSA, G289 WHA, Endurance WHA • Michelin X Works Z, XZY3, XZU S2 • Continental HSC1, CityService HA3 • Yokohama 104ZR Spec-2, MY627W Spec-2
17	RT910			<ul style="list-style-type: none"> • Bridgestone R244 • Goodyear G296 MSA • Michelin XFE Wide Base • Continental HTR2 • Yokohama RY253
17	RR99/RR9			<ul style="list-style-type: none"> • Bridgestone M853, M843 • Goodyear G731 MSA, G751 MSA • Michelin X Works Z, XZY3 • Continental HSC1 • Yokohama MY507
18	RLB980			<ul style="list-style-type: none"> • Bridgestone M854 • Goodyear G296 MSA • Michelin XZY3 Wide Base • Continental HTC1 • Yokohama MY507A
18	RR706			<ul style="list-style-type: none"> • Bridgestone M853, M843 • Goodyear G731 MSA, G751 MSA • Michelin X Works Z, XZY3 • Continental HSC1 • Yokohama MY507
19	RR4			<ul style="list-style-type: none"> • Bridgestone M840, M857 • Goodyear G288MSA • Michelin XZY • Continental HSC1 • Yokohama MY547

* Tire specifications are located in a previous category

FR610⁺

OptiGreen Series



ULTRA PREMIUM FUEL EFFICIENT STEER-POSITION TIRE

- New OptiGreen compound delivers low rolling resistance and maximum fuel efficiency.
- Innovative siping and defense grooves for long even wear.
- Durable four belt casing construction resists fatigue and delivers industry-leading lower total cost of ownership.
- Micro siping throughout the tread delivers improved traction and stability.



PRODUCT CODE	TIRE SIZE	PLY RATING	LOAD RANGE	LOAD INDEX	SPEED SYMBOL	OVERALL DIAMETER (INCH)	SECTION WIDTH (INCH)	TREAD DEPTH (32NDS)	RIM	SINGLE MAX LOAD/PRESSURE	DUAL MAX LOAD/PRESSURE	STATIC LOAD RADIUS	REVS PER MILE	WEIGHT (LB)
TBA	11R22.5	14	G	-	-	-	-	-	-	-	-	-	-	-
TBA	11R22.5	16	H	-	-	-	-	-	-	-	-	-	-	-
TBA	295/75R22.5	14	G	-	-	-	-	-	-	-	-	-	-	-
TBA	295/75R22.5	16	H	-	-	-	-	-	-	-	-	-	-	-
TBA	11R24.5	14	G	-	-	-	-	-	-	-	-	-	-	-
TBA	11R24.5	16	H	-	-	-	-	-	-	-	-	-	-	-
TBA	285/75R24.5	14	G	-	-	-	-	-	-	-	-	-	-	-

FR605⁺

OptiGreen Series



FUEL EFFICIENT STEER-POSITION TIRE

- Extensive siping and defense grooves in the tread provide even wear while maintaining excellent traction.
- Circumferential equalizer ribs help to distribute force by spreading the load across the face of the tire leading to more even wear.
- Fuel efficient compound for lower rolling resistance.



PRODUCT CODE	TIRE SIZE	PLY RATING	LOAD RANGE	LOAD INDEX	SPEED SYMBOL	OVERALL DIAMETER (INCH)	SECTION WIDTH (INCH)	TREAD DEPTH (32NDS)	RIM	SINGLE MAX LOAD/PRESSURE	DUAL MAX LOAD/PRESSURE	STATIC LOAD RADIUS	REVS PER MILE	WEIGHT (LB)
1133771255	11R22.5	14	G	144/142	M	41.4	11.1	17	8.25	6175lb/105psi	5840lb/105psi	19.8	496	113
1133771256	11R22.5	16	H	148/145	M	41.4	11.1	17	8.25	6940lb/123psi	6390lb/123psi	19.8	496	117
1133779255	295/75R22.5	14	G	144/141	M	40.6	11.7	17	9.00	6175lb/110psi	5675lb/110psi	18.8	510	108
1133771455	11R24.5	14	G	146/143	M	43.3	10.9	17	8.25	6610lb/105psi	6005lb/105psi	20.8	473	125
1133771456	11R24.5	16	H	149/146	M	43.3	10.9	17	8.25	7160lb/120psi	6610lb/120psi	20.8	473	128
1133778455	285/75R24.5	14	G	144/141	M	41.5	11.0	17	8.25	6175lb/110psi	5675lb/110psi	19.5	492	124

COMPARISON

STEER

DRIVE

TRAILER

MIXED SERVICE

TECHNICAL

WARRANTY

RR680



PREMIUM REGIONAL/ALL-POSITION STEER TIRE

- Micro sipes on the groove edges prevent the onset of irregular wear.
- Premium 5-rib tread design with wide shoulders provides for durability and even wear in regional steer/all position applications.
- SmartWay California CARB compliant tread compounds for lower rolling resistance and better fuel economy.



PRODUCT CODE	TIRE SIZE	PLY RATING	LOAD RANGE	LOAD INDEX	SPEED SYMBOL	OVERALL DIAMETER (INCH)	SECTION WIDTH (INCH)	TREAD DEPTH (32NDS)	RIM	SINGLE MAX LOAD/PRESSURE	DUAL MAX LOAD/PRESSURE	STATIC LOAD RADIUS	REVS PER MILE	WEIGHT (LB)
1133671255	11R22.5	14	G	144/142	L	41.4	11.1	18	8.25	6175lb/105psi	5840lb/105psi	19.8	499	115
1133671256	11R22.5	16	H	148/145	L	41.4	11.1	18	8.25	6940lb/123psi	6390lb/123psi	19.8	499	118
1133679255	295/75R22.5	14	G	144/141	M	40.6	11.7	18	9.00	6175lb/110psi	5675lb/110psi	19.5	504	118
TBA	295/75R22.5	16	H	146/143	M	40.4	11.7	18	9.00	6610lb/120psi	6005lb/120psi	18.9	518	112
1133671455	11R24.5	14	G	146/143	L	43.3	10.9	18	8.25	6610lb/105psi	6005lb/105psi	20.8	476	129
1133671456	11R24.5	16	H	149/146	L	43.3	10.9	18	8.25	7160lb/120psi	6610lb/120psi	20.8	476	132
1133678455	285/75R24.5	14	G	144/141	L	41.5	11.0	18	8.25	6175lb/110psi	5675lb/110psi	19.5	492	124
1133679214	9R22.5	14	G	136/134	L	38.3	9.1	18	6.75	4940lb/120psi	4675lb/120psi	17.9	206	110
1133679256	295/80R22.5	16	H	150/147	M	41.3	11.9	18	9.00	7390lb/120psi	6780lb/120psi	19.8	491	120
1133679258	295/80R22.5	18	J	152/149	M	41.3	11.9	18	9.00	7830lb/130psi	7160lb/130psi	19.8	491	120
1133671258	315/80R22.5	20	L	157/154	L	42.4	12.2	18	9.00	9090lb/130psi	8270lb/130psi	19.9	488	142
1133670456	305/75R24.5	16	H	154/149	M	42.7	11.6	19	9.00	8270lb/123psi	7160lb/123psi	20.8	516	145

RT600



PREMIUM LOW PROFILE REGIONAL/ALL-POSITION STEER TIRE

- Premium 5-rib design with wide shoulders provides durability in a variety of applications.
- Siping in the shoulder and ribs allow the tread to bite the road surface while also evacuating water and road debris.
- Enhanced tire compounds for long, even tread wear.



PRODUCT CODE	TIRE SIZE	PLY RATING	LOAD RANGE	LOAD INDEX	SPEED SYMBOL	OVERALL DIAMETER (INCH)	SECTION WIDTH (INCH)	TREAD DEPTH (32NDS)	RIM	SINGLE MAX LOAD/PRESSURE	DUAL MAX LOAD/PRESSURE	STATIC LOAD RADIUS	REVS PER MILE	WEIGHT (LB)
1133702796	225/70R19.5	14	G	128/126	M	32.3	8.5	16	6.75	3970lb/110psi	3750lb/110psi	15.2	635	70
TBA	225/70R19.5	14	G	128/126	N	32.5	8.8	19	6.75	3970lb/110psi	3750lb/110psi	15.1	644	69
1133704796	245/70R19.5	16	H	141/140	K	33.3	9.5	16	7.50	5675lb/125psi	5510lb/125psi	15.8	610	81
1133704797	245/70R19.5	16	H	136/134	K	33.3	9.5	16	7.50	4940lb/120psi	4675lb/120psi	15.8	610	81
1133706796	265/70R19.5	16	H	143/141	K	34.3	10.0	16	7.50	6010lb/125psi	5670lb/125psi	15.9	606	86
1133700894	8R19.5	12	F	124/122	M	34.1	8.2	16	6.00	3525lb/110psi	3305lb/110psi	16.3	592	68
1133709214	9R22.5	14	G	136/134	L	38.3	9.1	18	6.75	4940lb/120psi	4675lb/120psi	17.9	206	104
1133700225	10R22.5	14	G	141/139	L	40.2	10.0	18	7.50	5675lb/115psi	5355lb/115psi	18.9	510	108
1133707726	275/70R22.5	16	H	148/145	M	37.9	11.0	18	8.25	6930lb/131psi	6380lb/131psi	17.7	543	104
1133707574	7.50R17	10	E	121/116	L	33.6	8.7	16	6.00	3170lb/95psi	2780lb/95psi	-	-	65

RR150



PREMIUM 5-RIB STEER/ALL-POSITION MULTI-USE TIRE

- Unique solid shoulder design that provides long even wear in high scrub applications.
- Enhanced channel siping and wide grooves allow for premium wet/dry traction.
- Durable casing construction delivers optimum protection from impacts and scrub damage.



PRODUCT CODE	TIRE SIZE	PLY RATING	LOAD RANGE	LOAD INDEX	SPEED SYMBOL	OVERALL DIAMETER (INCH)	SECTION WIDTH (INCH)	TREAD DEPTH (32NDS)	RIM	SINGLE MAX LOAD/PRESSURE	DUAL MAX LOAD/PRESSURE	STATIC LOAD RADIUS	REVS PER MILE	WEIGHT (LB)
1133281255	11R22.5	14	G	144/142	M	41.4	11.1	19	8.25	6175lb/105psi	5840lb/105psi	19.8	499	115
1133281256	11R22.5	16	H	148/145	M	41.4	11.1	19	8.25	6940lb/123psi	6390lb/123psi	19.8	499	118
1133289255	295/75R22.5	14	G	144/141	M	40.6	11.7	19	9.00	6175lb/110psi	5675lb/110psi	19.5	504	118
1133281455	11R24.5	14	G	146/143	L	43.3	10.9	19	8.25	6610lb/105psi	6005lb/105psi	20.8	476	129
1133281456	11R24.5	16	H	149/146	L	43.3	10.9	19	8.25	7160lb/120psi	6610lb/120psi	20.8	476	132
1133288455	285/75R24.5	14	G	144/141	M	41.5	11.0	19	8.25	6175lb/110psi	5675lb/110psi	19.5	492	124
1133281026	10.00R20	16	H	146/143	L	41.3	10.7	19	7.50	6610lb/120psi	6005lb/120psi	19.4	497	121

RR300



LONG HAUL STEER-POSITION TIRE

- Specially designed tread siping for enhanced traction and stability.
- Shoulder decoupling grooves combined with center equalizer ribs distribute force evenly for long, smooth treadwear.
- Durable casing design for a long service life and multiple retreads.



PRODUCT CODE	TIRE SIZE	PLY RATING	LOAD RANGE	LOAD INDEX	SPEED SYMBOL	OVERALL DIAMETER (INCH)	SECTION WIDTH (INCH)	TREAD DEPTH (32NDS)	RIM	SINGLE MAX LOAD/PRESSURE	DUAL MAX LOAD/PRESSURE	STATIC LOAD RADIUS	REVS PER MILE	WEIGHT (LB)
1133291255	11R22.5	14	G	144/142	M	41.4	11.1	19	8.25	6175lb/105psi	5840lb/105psi	19.8	496	113
1133291256	11R22.5	16	H	148/145	M	41.4	11.1	19	8.25	6940lb/123psi	6390lb/123psi	19.8	496	117
1133299255	295/75R22.5	14	G	144/141	M	40.6	11.7	19	9.00	6175lb/110psi	5675lb/110psi	19.5	504	118
1133291455	11R24.5	14	G	146/143	M	43.3	10.9	19	8.25	6610lb/105psi	6005lb/105psi	20.8	473	126
1133291456	11R24.5	16	H	149/146	M	43.3	10.9	19	8.25	7160lb/120psi	6610lb/120psi	20.8	473	129
1133298455	285/75R24.5	14	G	144/141	M	41.5	11.0	19	8.25	6175lb/110psi	5675lb/110psi	19.5	492	123
1133299256	295/80R22.5	16	H	154/150	M	41.6	12.2	19	9.00	7820lb/120psi	6610lb/120psi	20.2	493	120
1133299258	295/80R22.5	18	J	152/149	M	41.6	12.2	19	9.00	7830lb/130psi	7160lb/130psi	20.2	493	120

RT606+

ULTRA PREMIUM 5-RIB REGIONAL STEER/ALL-POSITION TIRE

- Innovative zigzag siping and cut grooves combine to provide excellent traction and long even wear.
- Deep tread design for our best performance in regional steer/all position applications.
- Solid shoulder designed to keep the tread face stable during contact with the road surface for premium removal mileage.



PRODUCT CODE	TIRE SIZE	PLY RATING	LOAD RANGE	LOAD INDEX	SPEED SYMBOL	OVERALL DIAMETER (INCH)	SECTION WIDTH (INCH)	TREAD DEPTH (32NDS)	RIM	SINGLE MAX LOAD/PRESSURE	DUAL MAX LOAD/PRESSURE	STATIC LOAD RADIUS	REVS PER MILE	WEIGHT (LB)
1136071255	11R22.5	14	G	144/142	L	41.6	11.1	22	8.25	6175lb/105psi	5840lb/105psi	19.8	496	122
1136071256	11R22.5	16	H	148/145	L	41.6	11.1	22	8.25	6940lb/123psi	6390lb/123psi	19.8	496	125
1136079255	295/75R22.5	14	G	144/141	L	40.7	11.7	22	9.00	6175lb/110psi	5675lb/110psi	19.5	496	129
1136071455	11R24.5	14	G	146/143	L	43.5	10.9	22	8.25	6610lb/105psi	6005lb/105psi	20.8	473	137
1136071456	11R24.5	16	H	149/146	L	43.5	10.9	22	8.25	7160lb/120psi	6610lb/120psi	20.8	473	138
1136078455	285/75R24.5	14	G	144/141	L	41.5	10.6	22	8.25	6175lb/110psi	5675lb/110psi	19.5	492	131

FD405

OptiGreen Series



FUEL EFFICIENT DRIVE-POSITION TIRE

- New OptiGreen compound provides fuel savings without compromising performance.
- Closed shoulder tread design provides block stability for longer wear while maintaining excellent traction.
- Groove bottom protectors for added casing durability and longevity.



PRODUCT CODE	TIRE SIZE	PLY RATING	LOAD RANGE	LOAD INDEX	SPEED SYMBOL	OVERALL DIAMETER (INCH)	SECTION WIDTH (INCH)	TREAD DEPTH (32NDS)	RIM	SINGLE MAX LOAD/PRESSURE	DUAL MAX LOAD/PRESSURE	STATIC LOAD RADIUS	REVS PER MILE	WEIGHT (LB)
1133761255	11R22.5	14	G	144/142	L	42.0	10.9	26	8.25	6175lb/105psi	5840lb/105psi	20.1	488	120
1133761256	11R22.5	16	H	148/145	L	42.0	10.9	26	8.25	6940lb/123psi	6390lb/123psi	20.1	488	126
1133769255	295/75R22.5	14	G	144/141	L	41.2	11.7	26	9.00	6175lb/110psi	5675lb/110psi	19.0	507	120
1133761455	11R24.5	14	G	146/143	L	43.9	10.9	26	8.25	6610lb/105psi	6005lb/105psi	21.1	466	134
1133761456	11R24.5	16	H	149/145	L	43.9	10.9	26	8.25	7160lb/120psi	6610lb/120psi	21.1	466	138
1133768455	285/75R24.5	14	G	144/141	L	42.1	11.0	26	8.25	6175lb/110psi	5675lb/110psi	19.8	485	134

FD425

OptiGreen Series



SUPER WIDE DRIVE-POSITION TIRE

- New premium fuel-efficient compound increases removal miles versus previous generations.
- Block tread design with center sipes and zigzag grooves provide excellent traction and water evacuation.
- Shoulder tie bar helps keep footprint stable during rotation which cuts down on tire wear.
- Significant weight and fuel savings when used in place of duals.



PRODUCT CODE	TIRE SIZE	PLY RATING	LOAD RANGE	LOAD INDEX	SPEED SYMBOL	OVERALL DIAMETER (INCH)	SECTION WIDTH (INCH)	TREAD DEPTH (32NDS)	RIM	SINGLE MAX LOAD/PRESSURE	DUAL MAX LOAD/PRESSURE	STATIC LOAD RADIUS	REVS PER MILE	WEIGHT (LB)
1133804058	445/50R22.5	20	L	161	L	40.2	17.0	26	14.00	10200lb/120psi	N/A	18.4	523	180

COMPARISON

STEER

DRIVE

TRAILER

MIXED SERVICE

TECHNICAL

WARRANTY

RLB400



CLOSED SHOULDER DRIVE-POSITION TIRE

- Tighter tread block-to-void ratio helps keep the crown of the tire stable during rotation, leading to longer tread wear.
- Center sipes in the tread blocks help to grip the road surface, providing excellent traction and stability.
- Lug base design and groove bottom protectors aid in preventing debris from drilling into the casing.
- Full ³⁰/₃₂" tread depth provides exceptionally long wear across multiple applications.



PRODUCT CODE	TIRE SIZE	PLY RATING	LOAD RANGE	LOAD INDEX	SPEED SYMBOL	OVERALL DIAMETER (INCH)	SECTION WIDTH (INCH)	TREAD DEPTH (32NDS)	RIM	SINGLE MAX LOAD/PRESSURE	DUAL MAX LOAD/PRESSURE	STATIC LOAD RADIUS	REVS PER MILE	WEIGHT (LB)
1133481255	11R22.5	14	G	144/142	J	42.0	10.9	30	8.25	6175lb/105psi	5840lb/105psi	20.1	488	127
1133481256	11R22.5	16	H	148/145	J	42.0	10.9	30	8.25	6940lb/123psi	6390lb/123psi	20.1	488	130
1133489255	295/75R22.5	14	G	144/141	L	41.2	11.7	30	9.00	6175lb/110psi	5675lb/110psi	19.4	498	129
1133481455	11R24.5	14	G	146/143	L	43.9	10.9	30	8.25	6610lb/105psi	6005lb/105psi	21.1	466	139
1133481456	11R24.5	16	H	149/146	L	43.9	10.9	30	8.25	7160lb/120psi	6610lb/120psi	21.1	466	141
1133488455	285/75R24.5	14	G	144/141	L	42.1	11.0	30	8.25	6175lb/110psi	5675lb/110psi	19.8	485	131
1133480456	305/75R24.5	18	J	154/149	L	43.3	11.6	30	9.00	8267lb/123psi	7165lb/123psi	20.1	488	148

RLB490



LOW PROFILE DRIVE-POSITION MULTI-USE TIRE

- Innovative tread design and compounds provide long, even wear.
- Circumferential siping provides evacuation of water and debris leading to better tread contact with the road surface.
- Closed shoulder design keeps the tread stable while alternating tread blocks grip the road surface for a mix of long service life and driver confidence.



PRODUCT CODE	TIRE SIZE	PLY RATING	LOAD RANGE	LOAD INDEX	SPEED SYMBOL	OVERALL DIAMETER (INCH)	SECTION WIDTH (INCH)	TREAD DEPTH (32NDS)	RIM	SINGLE MAX LOAD/PRESSURE	DUAL MAX LOAD/PRESSURE	STATIC LOAD RADIUS	REVS PER MILE	WEIGHT (LB)
1134902796	225/70R19.5	14	G	128/126	N	32.5	8.8	19	6.75	3970lb/110psi	3750lb/110psi	15.8	635	68
1134904796	245/70R19.5	16	H	136/134	K	33.5	9.6	19	7.50	4940lb/120psi	4675lb/120psi	15.2	617	84
1134906796	265/70R19.5	16	H	143/141	K	34.6	10.0	22	7.50	6010lb/125psi	5670lb/125psi	16.4	615	93
1134905726	255/70R22.5	16	H	140/137	L	37.0	10.0	22	7.50	5510lb/120psi	5070lb/120psi	17.0	597	96
1134907726	275/70R22.5	16	H	148/145	K	38.1	11.0	22	8.25	6930lb/131psi	6380lb/131psi	17.7	543	112

RLB1/RLB11*

PREMIUM OPEN SHOULDER DRIVE-POSITION TIRE

- Open shoulder design with locking center rib provides a blend of long wear and traction in any environment.
- Tie bar on the outside shoulder helps to maintain stability of the footprint and combat irregular wear.
- Siping in the tread blocks allows the tire to cut through water and debris.
- Robust design provides protection from hazards and job site debris.



PRODUCT CODE	TIRE SIZE	PLY RATING	LOAD RANGE	LOAD INDEX	SPEED SYMBOL	OVERALL DIAMETER (INCH)	SECTION WIDTH (INCH)	TREAD DEPTH (32NDS)	RIM	SINGLE MAX LOAD/PRESSURE	DUAL MAX LOAD/PRESSURE	STATIC LOAD RADIUS	REVS PER MILE	WEIGHT (LB)
1133411255	11R22.5	14	G	144/142	M	41.7	10.9	26	8.25	6175lb/105psi	5840lb/105psi	19.8	493	124
1133411256	11R22.5	16	H	148/145	M	41.7	10.9	26	8.25	6940lb/123psi	6390lb/123psi	19.8	493	128
1133419255	295/75R22.5	14	G	144/141	L	40.9	11.7	26	9.00	6175lb/110psi	5675lb/110psi	19.4	498	129
1133411455	11R24.5	14	G	146/143	L	43.7	10.9	26	8.25	6610lb/105psi	6005lb/105psi	21.0	471	137
1133411456	11R24.5	16	H	149/146	L	43.7	10.9	26	8.25	7160lb/120psi	6610lb/120psi	21.0	471	140
1133418455	285/75R24.5	14	G	144/141	L	41.9	11.0	26	8.25	6175lb/110psi	5675lb/110psi	19.8	485	134
1133412796	225/70R19.5	14	G	128/126	N	32.5	8.8	19	6.75	3970lb/110psi	3750lb/110psi	15.1	644	70
1133414796	245/70R19.5	16	H	136/134	J	33.5	9.6	19	7.50	4940lb/120psi	4675lb/120psi	15.2	617	84
1133419206	9.00R20	16	H	144/142	L	40.6	10.1	26	7.00	6175lb/130psi	5840lb/130psi	19.1	505	119
1133411026	10.00R20	16	H	146/143	L	41.5	10.7	22	7.50	6610lb/120psi	6005lb/120psi	19.4	497	134
1133410225	10R22.5	14	G	141/139	K	40.2	10.0	22	7.50	5675lb/115psi	5355lb/115psi	18.3	512	112
1133415726	255/70R22.5	16	H	140/137	K	36.7	9.9	22	7.50	5510lb/120psi	5070lb/120psi	17.4	560	91
1133419258	295/80R22.5	18	J	152/149	M	41.5	11.7	26	9.00	7830lb/130psi	7160lb/130psi	19.8	493	130
1133971206*	11.00R20	16	H	150/147	L	43.1	11.2	29	8.00	7390lb/120psi	6780lb/120psi	20.2	476	149
1133971208*	11.00R20	18	J	152/149	J	43.0	11.3	23	8.00	7830lb/130psi	7160lb/130psi	20.2	476	149

RSD1

ULTRA PREMIUM DRIVE-POSITION TIRE OPTIMIZED FOR SEVERE WINTER CONDITIONS

- Offset tread blocks that deliver stability on any road surface.
- Full depth siping delivers outstanding traction in mud and snow conditions.
- Durable casing construction designed to withstand the rigors of any operation.



PRODUCT CODE	TIRE SIZE	PLY RATING	LOAD RANGE	LOAD INDEX	SPEED SYMBOL	OVERALL DIAMETER (INCH)	SECTION WIDTH (INCH)	TREAD DEPTH (32NDS)	RIM	SINGLE MAX LOAD/PRESSURE	DUAL MAX LOAD/PRESSURE	STATIC LOAD RADIUS	REVS PER MILE	WEIGHT (LB)
1133711256	11R22.5	16	H	148/145	L	41.7	11.0	25.8	8.25	6940lb/123psi	6390lb/123psi	19.4	499	130
1133711456	11R24.5	16	H	149/146	L	43.6	10.9	25.8	8.25	7160lb/120psi	6610lb/120psi	20.4	476	140

RLB450

OPEN SHOULDER DRIVE-POSITION TIRE

- Innovative open shoulder tread design provides outstanding traction and delivers even wear.
- Heavy-duty casings provide strength and stability, and promote retreadability.
- Deep tread depth provides excellent wear in long and short haul applications.



PRODUCT CODE	TIRE SIZE	PLY RATING	LOAD RANGE	LOAD INDEX	SPEED SYMBOL	OVERALL DIAMETER (INCH)	SECTION WIDTH (INCH)	TREAD DEPTH (32NDS)	RIM	SINGLE MAX LOAD/PRESSURE	DUAL MAX LOAD/PRESSURE	STATIC LOAD RADIUS	REVS PER MILE	WEIGHT (LB)
1133611255	11R22.5	14	G	144/142	L	41.9	10.9	25	8.25	6175lb/105psi	5840lb/105psi	19.8	493	120
1133611256	11R22.5	16	H	148/145	L	41.9	10.9	25	8.25	6940lb/120psi	6390lb/120psi	19.8	493	125
1133619253	295/60R22.5	16	H	150/147	L	36.5	11.5	24	9.00	7390lb/130psi	6780lb/130psi	17.4	560	125
1133619255	295/75R22.5	14	G	144/141	L	40.8	11.4	24	9.00	6175lb/110psi	5675lb/110psi	19.4	495	128
1133619258	295/80R22.5	18	J	152/149	M	41.8	11.7	29	9.00	7830lb/130psi	7160lb/130psi	19.8	493	130
1133611455	11R24.5	14	G	146/143	L	41.7	10.9	25	8.25	6610lb/105psi	6005lb/105psi	19.8	471	134
1133611456	11R24.5	16	H	149/146	L	41.7	10.9	25	8.25	7160lb/120psi	6610lb/120psi	19.8	471	137
1133618455	285/75R24.5	14	G	144/141	L	41.9	11.0	24	8.25	6175lb/110psi	5675lb/100psi	19.8	485	127
1133611258	315/80R22.5	18	J	156/150	L	43.2	12.5	29	9.00	8820lb/123psi	7385lb/123psi	21.0	480	161
1133611259	315/80R22.5	20	L	157/154	J	43.2	12.5	29	9.00	9090lb/130psi	8270lb/130psi	21.0	480	161
1133611406	11.00R22	16	H	152/149	K	45.4	11.6	30	8.00	7830lb/130psi	7160lb/120psi	21.2	466	134

RSD3

ULTRA PREMIUM DRIVE-POSITION TIRE OPTIMIZED FOR SEVERE WINTER CONDITIONS

- Excellent traction on all road surfaces and conditions.
- Open shoulder design for added cleaning ability in winter conditions.
- Zigzag siping and proven tread block design for increased performance and wear.



PRODUCT CODE	TIRE SIZE	PLY RATING	LOAD RANGE	LOAD INDEX	SPEED SYMBOL	OVERALL DIAMETER (INCH)	SECTION WIDTH (INCH)	TREAD DEPTH (32NDS)	RIM	SINGLE MAX LOAD/PRESSURE	DUAL MAX LOAD/PRESSURE	STATIC LOAD RADIUS	REVS PER MILE	WEIGHT (LB)
1133951256	11R22.5	16	H	148/145	L	41.9	10.9	25	8.25	6940lb/120psi	6390lb/120psi	19.8	493	125
1133951456	11R24.5	16	H	149/146	L	43.7	10.9	26	8.25	7160lb/120psi	6610lb/120psi	21.0	471	140

RLB800

PREMIUM DEEP TREAD ON/OFF HIGHWAY SEVERE SERVICE DRIVE-POSITION TIRE

- Advanced chip/cut and abrasion resistant compounds for increased mileage.
- Extra deep open shoulder design evacuates mud and soft soil, providing traction even in challenging environments.
- Durable casing construction.



PRODUCT CODE	TIRE SIZE	PLY RATING	LOAD RANGE	LOAD INDEX	SPEED SYMBOL	OVERALL DIAMETER (INCH)	SECTION WIDTH (INCH)	TREAD DEPTH (32NDS)	RIM	SINGLE MAX LOAD/PRESSURE	DUAL MAX LOAD/PRESSURE	STATIC LOAD RADIUS	REVS PER MILE	WEIGHT (LB)
1133501026	10.00R20	16	H	146/143	G	41.9	10.7	29	7.50	6610lb/120psi	6005lb/120psi	19.7	489	130
1133501027	10.00R20	18	J	149/146	G	41.9	10.7	29	7.50	7160lb/61psi	6610lb/61psi	19.7	489	130
1133501256	11R22.5	16	H	148/145	G	41.9	10.9	29	8.25	6940lb/123psi	6390lb/123psi	20.0	491	132
1133501456	11R24.5	16	H	149/146	G	43.9	10.9	29	8.25	7160lb/120psi	6610lb/120psi	21.0	468	141
1133502258	12R22.5	18	J	152/149	K	43.6	11.9	33	9.00	7830lb/61psi	7160lb/61psi	23.0	423	160
1133502250	12.00R24 (NHS)	18	J	158/155	J	48.4	12.3	30	8.50	9370lb/120psi	8540lb/120psi	22.7	423	221

RLB600

EXTRA DEEP TREAD ON/OFF HIGHWAY SEVERE SERVICE DRIVE-POSITION TIRE

- Extra deep with over an inch of tread for long life even in challenging mixed service applications.
- Center sipes in the tread blocks cut through water and debris, providing excellent traction and stability.
- Open shoulder design for evacuation of mud and soft soil.



PRODUCT CODE	TIRE SIZE	PLY RATING	LOAD RANGE	LOAD INDEX	SPEED SYMBOL	OVERALL DIAMETER (INCH)	SECTION WIDTH (INCH)	TREAD DEPTH (32NDS)	RIM	SINGLE MAX LOAD/PRESSURE	DUAL MAX LOAD/PRESSURE	STATIC LOAD RADIUS	REVS PER MILE	WEIGHT (LB)
1133491256	11R22.5	16	H	148/145	G	43.0	11.1	33	8.25	6940lb/123psi	6390lb/123psi	20.6	478	139
1133491456	11R24.5	16	H	149/146	G	44.0	11.1	33	8.25	7160lb/120psi	6610lb/120psi	21.6	455	152

COMPARISON

STEER

DRIVE

TRAILER

MIXED SERVICE

TECHNICAL

WARRANTY

FT105⁺

OptiGreen Series



FUEL EFFICIENT TRAILER-POSITION TIRE

- Advanced tread compounds and internal construction provide low rolling resistance and longer mileage.
- Extensive tread siping helps fight irregular wear in free rolling positions.
- Durable casings provide long original tread life and promotes multiple retreads.



PRODUCT CODE	TIRE SIZE	PLY RATING	LOAD RANGE	LOAD INDEX	SPEED SYMBOL	OVERALL DIAMETER (INCH)	SECTION WIDTH (INCH)	TREAD DEPTH (32NDS)	RIM	SINGLE MAX LOAD/PRESSURE	DUAL MAX LOAD/PRESSURE	STATIC LOAD RADIUS	REVS PER MILE	WEIGHT (LB)
1133751255	11R22.5	14	G	144/142	M	41.0	10.9	12	8.25	6175lb/105psi	5840lb/105psi	19.5	500	108
1133751256	11R22.5	16	H	148/145	M	41.0	10.9	12	8.25	6940lb/123psi	6390lb/123psi	19.5	500	108
1133759255	295/75R22.5	14	G	144/141	M	40.2	11.7	12	8.25	6175lb/110psi	5675lb/110psi	18.9	510	102
1133751455	11R24.5	14	G	146/143	L	42.9	10.9	12	8.25	6610lb/105psi	6005lb/105psi	20.8	476	111
1133751456	11R24.5	16	H	149/145	L	42.9	10.9	12	8.25	7160lb/120psi	6610lb/120psi	20.8	476	111
1133758455	285/75R24.5	14	G	144/141	M	41.1	11.0	12	8.25	6175lb/110psi	5675lb/110psi	19.3	505	107
1133755726	255/70R22.5	16	H	140/137	M	36.4	9.5	12	7.50	5510lb/120psi	5070lb/120psi	17.4	560	85

FT125⁺

OptiGreen Series



SUPER WIDE FUEL EFFICIENT TRAILER-POSITION TIRE

- Advanced OptiGreen compound and innovative tread design delivers optimum fuel efficiency.
- Unique construction promotes a consistent footprint for strength and even wear.
- Groove bottom protection resists stone penetration and our durable casing design affords resistance to punctures.
- Significant weight and fuel savings when used in place of duals.



PRODUCT CODE	TIRE SIZE	PLY RATING	LOAD RANGE	LOAD INDEX	SPEED SYMBOL	OVERALL DIAMETER (INCH)	SECTION WIDTH (INCH)	TREAD DEPTH (32NDS)	RIM	SINGLE MAX LOAD/PRESSURE	DUAL MAX LOAD/PRESSURE	STATIC LOAD RADIUS	REVS PER MILE	WEIGHT (LB)
1133794058	445/50R22.5	20	L	161	L	40.0	18.0	16	14.00	10200lb/120psi	N/A	18.4	523	168

IM105⁺



FUEL EFFICIENT CONTAINER CHASSIS RADIAL TIRE

- EPA SmartWay®-verified and CARB compliant for superior fuel savings and reduced emissions.
- Engineered with Double Coin's superior manufacturing quality standards to deliver consistent quality and durable casings.
- Advanced compounds with added ozone resistance for longer service life.



PRODUCT CODE	TIRE SIZE	PLY RATING	LOAD RANGE	LOAD INDEX	SPEED SYMBOL	OVERALL DIAMETER (INCH)	SECTION WIDTH (INCH)	TREAD DEPTH (32NDS)	RIM	SINGLE MAX LOAD/PRESSURE	DUAL MAX LOAD/PRESSURE	STATIC LOAD RADIUS	REVS PER MILE	WEIGHT (LB)
1133831255	11R22.5	14PR (LRG)	G	144/142	M	41.1	11.2	12	8.25	6175lb/105psi	5840lb/105psi	19.3	505	110
1133839255	295/75R22.5	14PR (LRG)	G	144/141	M	40.0	11.7	12	8.25	6175lb/110psi	5675lb/110psi	18.7	520	105

RT500



PREMIUM LOW PROFILE ALL-POSITION MULTI-USE TIRE

- Special compounds used to deliver exceptional mileage in a variety of specialty trailer applications.
- Solid shoulders with unique waved siping added to the ribs help fight irregular wear, leading to better performance.
- Durable casing design with 4 steel belts provides protection from hazards leading to more uptime.



PRODUCT CODE	TIRE SIZE	PLY RATING	LOAD RANGE	LOAD INDEX	SPEED SYMBOL	OVERALL DIAMETER (INCH)	SECTION WIDTH (INCH)	TREAD DEPTH (32NDS)	RIM	SINGLE MAX LOAD/PRESSURE	DUAL MAX LOAD/PRESSURE	STATIC LOAD RADIUS	REVS PER MILE	WEIGHT (LB)
1132598256	8.25R15TR	14	G	129/127	K	33.2	9.1	16	6.50	4080lb/120psi	3860lb/120psi	15.4	627	57
1132598257	8.25R15TR	18	J	143/141	K	33.2	9.1	16	6.50	6005lb/123psi	5675lb/123psi	15.4	627	57
1132591056	10.00R15TR	16	H	141/139	L	36.3	10.8	16	7.50	5675lb/120psi	5355lb/120psi	17.0	570	70
1132591057	10.00R15TR	18	J	148/145	K	36.3	10.8	16	7.50	6940lb/123psi	6390lb/123psi	17.0	570	70
1132697565	7.50R16LT	14	G	122/118	L	31.7	8.3	16	6.00G	3305lb/112psi	2910lb/112psi	14.6	662	56
1133391783	8R17.5	10	E	118/116	L	30.9	8.2	16	6.00	2910lb/95psi	2755lb/95psi	14.3	675	59
1133391706	10R17.5	16	H	143/141	L	33.9	9.8	16	7.50HC	6005lb/123psi	5675lb/123psi	15.8	613	79
1133391776	215/75R17.5	16	H	61/133	K	30.4	8.5	16	6.00	4805lb/125psi	4540lb/125psi	14.0	692	61
1133396797	235/75R17.5	18	J	143/141	L	31.6	9.1	16	6.75	6010lb/125psi	5680lb/125psi	14.7	662	72
1133394778	245/70R17.5	18	J	143/141	J	31.1	9.9	17	7.50	6005lb/127psi	5675lb/127psi	14.5	680	65
1133390894	8R19.5	12	F	124/122	M	34.1	8.2	16	6.00	3525lb/110psi	3305lb/110psi	16.3	592	69
1133396796	265/70R19.5	16	H	143/141	K	34.3	10.0	16	7.50	6010lb/125psi	5670lb/125psi	15.9	606	89
TBA	255/70R22.5	16	H	140/137	N	36.6	10.0	16	7.50	5510lb/120psi	5070lb/115psi	17.1	572	88
1133395727*	255/70R22.5	16	H	140/137	N	36.6	10.0	16	7.50	5510lb/115psi	5070lb/115psi	17.4	560	87
1133395726	255/70R22.5	16	H	140/137	N	36.6	10.0	16	7.50	5510lb/115psi	5070lb/115psi	17.4	560	87
1133397726	275/70R22.5	16	H	148/145	M	37.8	10.6	16	8.25	6930lb/131psi	6380lb/131psi	17.7	543	104
1133398796	285/70R19.5	16	H	145/143	M	35.2	11.0	16	8.25	6390lb/123psi	6010lb/123psi	16.2	590	93

* Cut/chip compound

TR100



ULTRA PREMIUM SHALLOW TREAD TRAILER-POSITION TIRE

- Tread design promotes even wear in free rolling/trailer axle positions.
- Center rib designed to eject stones, preserving casing integrity and promoting multiple retreads.
- 14/32" tread depth delivers long original mileage.



PRODUCT CODE	TIRE SIZE	PLY RATING	LOAD RANGE	LOAD INDEX	SPEED SYMBOL	OVERALL DIAMETER (INCH)	SECTION WIDTH (INCH)	TREAD DEPTH (32NDS)	RIM	SINGLE MAX LOAD/PRESSURE	DUAL MAX LOAD/PRESSURE	STATIC LOAD RADIUS	REVS PER MILE	WEIGHT (LB)
1133381255	11R22.5	14	G	144/142	M	41.0	10.9	14	8.25	6175lb/105psi	5840lb/105psi	19.5	500	113
1133381256	11R22.5	16	H	148/145	M	41.0	10.9	14	8.25	6940lb/123psi	6390lb/123psi	19.5	500	116
1133389255	295/75R22.5	14	G	144/141	M	40.2	11.7	14	9.00	6175lb/110psi	5675lb/110psi	18.9	510	114
1133381455	11R24.5	14	G	146/143	L	42.9	10.9	14	8.25	6610lb/105psi	6005lb/105psi	20.8	476	124
1133381456	11R24.5	16	H	149/146	L	42.9	10.9	14	8.25	7160lb/120psi	6610lb/120psi	20.8	476	125
1133388455	285/75R24.5	14	G	144/141	L	41.1	11.0	14	8.25	6175lb/110psi	5675lb/110psi	19.3	505	114

RLB900+

WIDE BASE MIXED SERVICE ALL-POSITION TIRE

- Offset tread elements provide traction and stability in mud / soft soil environments.
- Heavy solid shoulder design with lateral sipes provide a biting edge for traction and stability.
- Heavy-duty belt package and undertread provide durability and retreadability.



PRODUCT CODE	TIRE SIZE	PLY RATING	LOAD RANGE	LOAD INDEX	SPEED SYMBOL	OVERALL DIAMETER (INCH)	SECTION WIDTH (INCH)	TREAD DEPTH (32NDS)	RIM	SINGLE MAX LOAD/PRESSURE	DUAL MAX LOAD/PRESSURE	STATIC LOAD RADIUS	REVS PER MILE	WEIGHT (LB)
1133648258	385/65R22.5	20	L	160/158	K/L	42.2	14.8	22	11.75	9920lb/130psi	N/A	19.5	497	164
1133642258	425/65R22.5	20	L	165	K	44.6	16.3	22	13.00	11400lb/120psi	N/A	21.2	458	205
1133642548	445/65R22.5	20	L	168	J	45.3	17.9	22	14.00	12300lb/120psi	N/A	20.9	457	229

RR202



ULTRA PREMIUM 5-RIB HIGHWAY SERVICE TIRE

- Modern multi-rib tread design with more overall rubber mass for better stability and longer mileage.
- Our unique half-cut sipes bite the road surface while also helping to reduce irregular wear.
- Designed using a rib-to-void ratio that channels out water effectively for a safe, comfortable ride.



PRODUCT CODE	TIRE SIZE	PLY RATING	LOAD RANGE	LOAD INDEX	SPEED SYMBOL	OVERALL DIAMETER (INCH)	SECTION WIDTH (INCH)	TREAD DEPTH (32NDS)	RIM	SINGLE MAX LOAD/PRESSURE	DUAL MAX LOAD/PRESSURE	STATIC LOAD RADIUS	REVS PER MILE	WEIGHT (LB)
1133667165	7.00R16	14	G	118/114	L	30.3	7.9	15	5.50F	2680lb/97psi	2335lb/97psi	14.1	670	55
1133661406	11.00R22	16	H	152/149	K	44.8	11.5	21	8.00	7830lb/120psi	7160lb/120psi	21.2	466	61
1133661256	11R22.5	16	H	148/145	M	41.4	11.1	20	8.25	6940lb/123psi	6390lb/123psi	19.5	496	118
1133662258	12R22.5	18	J	152/149	M	42.6	11.8	19	9.00	7830lb/61psi	7160lb/61psi	20.7	465	61
1133669253	295/60R22.5	16	H	150/147	L	36.5	11.5	20	9.00	7390lb/130psi	6780lb/130psi	17.4	560	120
1133669255	295/75R22.5	14	G	144/141	M	40.6	11.7	18	9.00	6175lb/110psi	5675lb/110psi	18.7	341	109
1133669256	295/80R22.5	16	H	154/150	M	41.3	11.9	19	9.00	7820lb/120psi	6940lb/120psi	19.8	191	131
1133669258	295/80R22.5	18	J	152/149	M	41.3	11.9	19	9.00	7830lb/130psi	7160lb/130psi	19.8	191	131
1133661257	315/80R22.5	18	J	156/152	M	42.4	12.2	20	9.00	8820lb/120psi	7830lb/120psi	19.9	483	142
1133661258	315/80R22.5	20	L	157/154	L	42.4	12.2	20	9.00	9090lb/130psi	8270lb/130psi	19.9	483	142
1133661259	315/80R22.5	22	M	160/157	65MPH	42.4	12.2	20	9.00	10000lb/130psi	9090lb/130psi	19.9	483	147

RT910



PREMIUM WIDE BASE ALL-POSITION TIRE

- 5-rib design for regional applications where the vehicle spends a majority of its time on improved roads.
- Wider shoulders and thick ribs provide stability and deliver more mileage.
- Specifically designed with compounds that perform exceptionally well in local delivery applications.



PRODUCT CODE	TIRE SIZE	PLY RATING	LOAD RANGE	LOAD INDEX	SPEED SYMBOL	OVERALL DIAMETER (INCH)	SECTION WIDTH (INCH)	TREAD DEPTH (32NDS)	RIM	SINGLE MAX LOAD/PRESSURE	DUAL MAX LOAD/PRESSURE	STATIC LOAD RADIUS	REVS PER MILE	WEIGHT (LB)
1133828258	385/65R22.5	20	L	160	K	42.1	14.9	19	11.75	9920lb/130psi	N/A	20.0	488	163

RR99/RR9*



PREMIUM ON/OFF HIGHWAY MIXED SERVICE ALL-POSITION TIRE

- Strong all-position tread pattern designed for multiple on/off highway uses.
- Cut/chip resistant compounds for excellent performance in tough applications.
- Outside shoulder grooves with zigzag center grooves provide added traction in mud and soft soil.



PRODUCT CODE	TIRE SIZE	PLY RATING	LOAD RANGE	LOAD INDEX	SPEED SYMBOL	OVERALL DIAMETER (INCH)	SECTION WIDTH (INCH)	TREAD DEPTH (32NDS)	RIM	SINGLE MAX LOAD/PRESSURE	DUAL MAX LOAD/PRESSURE	STATIC LOAD RADIUS	REVS PER MILE	WEIGHT (LB)
TBA	7.50R16	14	G	122/118	L	31.9	8.3	16	6.00	3305lb/112psi	2910lb/112psi	14.7	656	59
1133991256	11R22.5	16	H	148/145	L	41.3	10.9	19	8.25	6940lb/123psi	6390lb/123psi	19.5	496	123
1133991456	11R24.5	16	H	149/146	L	43.4	10.9	21	8.25	7160lb/120psi	6610lb/120psi	21.0	484	131
1133992256	12R22.5	16	H	152/148	L	42.7	11.8	21	9.00	7830lb/120psi	6940lb/120psi	20.1	516	134
1133992258	12R22.5	18	J	152/149	L	42.7	11.8	21	9.00	7830lb/61psi	7160lb/61psi	20.1	516	134
1133433227	13R22.5	18	J	154/151	M	43.9	12.2	20	9.75	8270lb/123psi	7610lb/123psi	20.7	465	164
1133991257	315/80R22.5	18	J	156/152	L	42.7	12.4	19	9.00	8820lb/120psi	7830lb/120psi	19.9	484	145
1133991258	315/80R22.5	20	L	157/154	L	42.4	12.2	19	9.00	9090lb/130psi	8270lb/130psi	19.9	483	147
1133991259	315/80R22.5	22	M	160/157	65MPH	42.4	12.2	20	9.00	10000lb/130psi	9090lb/130psi	19.9	483	147
1133439205*	9.00R20	14	G	141/139	M	40.2	10.1	19	7.00	5675lb/115psi	5355lb/115psi	18.9	510	110
1133431026*	10.00R20	16	H	146/143	K	41.3	10.7	20	7.50	6610lb/120psi	6005lb/120psi	19.4	497	140
1133431206*	11.00R20	16	H	150/147	K	42.7	11.1	20	8.00	7390lb/120psi	6780lb/120psi	20.1	478	155
1133432207*	12.00R20	18	J	154/151	L	44.0	11.7	20	8.50	8270lb/120psi	7610lb/120psi	20.6	466	164

RLB980

PREMIUM ALL-PURPOSE ALL-POSITION TIRE

- Aggressive multi-purpose tread design ideal for on/off highway applications.
- Center siping in the tread elements bite the road surface for improved traction and stability.
- Inter-block tie bars keep the tread stable even as the tire wears.
- Semi-open outside shoulder for superior evacuation of mud, soft soil, and water.



PRODUCT CODE	TIRE SIZE	PLY RATING	LOAD RANGE	LOAD INDEX	SPEED SYMBOL	OVERALL DIAMETER (INCH)	SECTION WIDTH (INCH)	TREAD DEPTH (32NDS)	RIM	SINGLE MAX LOAD/PRESSURE	DUAL MAX LOAD/PRESSURE	STATIC LOAD RADIUS	REVS PER MILE	WEIGHT (LB)
1133968258	385/65R22.5	20	L	160	K	42.3	14.8	23	11.75	9920lb/130psi	N/A	19.8	495	165
TBA	425/65R22.5	20	L	165	K	44.6	16.5	23	12.25	11400lb/120psi	N/A	20.5	469	196
1133962548	445/65R22.5	20	L	168	K	45.3	17.4	23	13.00	12300lb/120psi	N/A	20.9	457	216

RR706

ULTRA PREMIUM MIXED SERVICE ALL-POSITION TIRE

- Aggressive mixed service compounds and durable casing design provide resistance to chips/cuts and damage from scrubbing.
- Thick solid shoulders with special groove cuts keep the tread surface stable for longer wear while providing traction in tough conditions.
- Unique angled block separation for improved evacuation of water, mud, and soft soil.



PRODUCT CODE	TIRE SIZE	PLY RATING	LOAD RANGE	LOAD INDEX	SPEED SYMBOL	OVERALL DIAMETER (INCH)	SECTION WIDTH (INCH)	TREAD DEPTH (32NDS)	RIM	SINGLE MAX LOAD/PRESSURE	DUAL MAX LOAD/PRESSURE	STATIC LOAD RADIUS	REVS PER MILE	WEIGHT (LB)
1137061256	11R22.5	16	H	148/145	L	41.7	11.1	25.2	8.25	6940lb/123psi	6390lb/123psi	19.4	498	126
1137061456	11R24.5	16	H	149/146	L	43.6	11.0	25.2	8.25	7160lb/120psi	6610lb/120psi	20.4	477	133
TBA	12R22.5	18	J	-	-	-	-	-	-	-	-	1.8	-	-
1137062456	12R24.5	16	H	152/149	K	45.1	11.7	26	9	7830lb/120psi	7160lb/120psi	21.2	466	145
TBA	315/80R22.5	20	L	-	-	-	-	-	-	-	-	1.7	-	-

COMPARISON

STEER

DRIVE

TRAILER

MIXED SERVICE

TECHNICAL

WARRANTY

RR4



PREMIUM ON/OFF HIGHWAY ALL-POSITION TIRE

- Rugged all-position tread pattern designed for multiple on/off highway applications.
- Heavy-duty casing construction delivers excellent performance in tough applications.
- Large open grooves and aggressive shoulders deliver superior traction.



PRODUCT CODE	TIRE SIZE	PLY RATING	LOAD RANGE	LOAD INDEX	SPEED SYMBOL	OVERALL DIAMETER (INCH)	SECTION WIDTH (INCH)	TREAD DEPTH (32NDS)	RIM	SINGLE MAX LOAD/PRESSURE	DUAL MAX LOAD/PRESSURE	STATIC LOAD RADIUS	REVS PER MILE	WEIGHT (LB)
1133402248	12.00R24	20	L	160/157	K	48.0	12.0	21	8.50	9920lb/120psi	9090lb/130psi	22.5	427	175

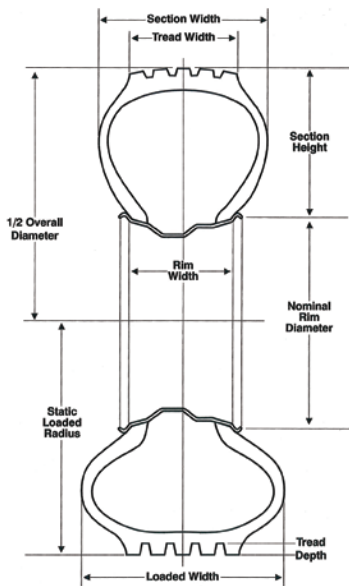
TECHNICAL DATA

LOAD INDEX & EQUIVALENT LOADS

LOAD INDEX	LOAD (LB)*	LOAD INDEX	LOAD (LB)*	LOAD INDEX	LOAD (LB)*	LOAD INDEX	LOAD (LB)*
74	827	98	1653	122	3307	146	6614
75	853	99	1709	123	3417	147	6779
76	882	100	1764	124	3527	148	6944
77	908	101	1819	125	3638	149	7165
78	937	102	1874	126	3748	150	7385
79	963	103	1929	127	3858	151	7605
80	992	104	1984	128	3968	152	7827
81	1019	105	2039	129	4079	153	8047
82	1047	106	2094	130	4189	154	8268
83	1074	107	2149	131	4299	155	8543
84	1102	108	2205	132	4409	156	8819
85	1135	109	2271	133	4541	157	9094
86	1168	110	2337	134	4674	158	9370
87	1201	111	2403	135	4806	159	9645
88	1235	112	2469	136	4938	160	9921
89	1279	113	2535	137	5071	161	10196
90	1323	114	2601	138	5203	162	10472
91	1356	115	2679	139	5357	163	10748
92	1389	116	2756	140	5512	164	11023
93	1433	117	2833	141	5677	165	11255
94	1477	118	2910	142	5842	166	11684
95	1521	119	2998	143	6008	167	12015
96	1565	120	3088	144	6173	168	12346
97	1609	121	3197	145	6393	169	12787

*One pound is equal to .4536 kg.

TRUCK TIRE DIMENSIONS



$$\text{Aspect Ratio} = \frac{\text{Section Height}}{\text{Section Width}}$$

OVERALL DIAMETER

The measurement of the distance of an unladen tire from tread surface to tread surface on opposite sides of the tire.

SECTION WIDTH

Measurement of the cross section of an unladen tire across the casing only; not including ribs or protrusions.

TREAD WIDTH

Distance across the tread face of an unladen tire.

TREAD DEPTH

Distance from tread surface to major groove base at designated measuring point.

SECTION HEIGHT

Distance from the bead seat to the tread surface of an unladen tire.

RIM WIDTH

Distance between the rim flanges.

NOMINAL RIM DIAMETER

Diameter of the rim from bead seat to bead seat in inches.

STATIC LOADED RADIUS

Distance from the center of the axle to the ground of a loaded tire under maximum dual load and inflation as stamped on the sidewall of the tire.

REVOLUTIONS PER MILE (RPM)

The number of tire revolutions in one mile, measured at 55 mph maximum dual load and inflation (as stamped on the tire's sidewall).

Note: All dimensions measured following a 24-hour inflation period.

MAXIMUM LOAD & INFLATION TABLE

TIRE SIZE	PLY RATING	SINGLE LOAD CAPACITY	SINGLE MAX INFLATION	DUAL LOAD CAPACITY	DUAL MAX INFLATION
215/75R17.5	16(H)	4805	125	4540	125
8R19.5	12(F)	3500	110	3070	100
225/70R19.5	12(F)	3640	95	3415	95
245/70R19.5*	16(H)	5675	125	5510	125
265/75R19.5	16(H)	6010	125	5670	125
9.00R20	14(G)	5670	115	4970	105
9.00R20	16(H)	6215	130	5420	120
10.00R20	14(G)	6040	105	5300	95
10.00R20	16(H)	6610	120	5800	110
11.00R20	16(H)	7200	120	6320	110
12.00R20	18(J)	8210	120	7200	110
10R22.5*	14(G)	5670	115	4970	105
11R22.5*	14(G)	6040	105	5300	95
11R22.5*	16(H)	6610	120	5800	110
12R22.5*	16(H)	7200	120	6320	110
13R22.5	18(J)	8267	123	7385	123
255/70R22.5	16(H)	5510	115	5070	115
275/70R22.5	16(H)	6930	131	6380	131
295/75R22.5	14(G)	6175	110	5675	110
295/80R22.5	16(H)	7830	120	6940	120
315/80R22.5	18(J)	8265	115	7385	115
315/80R22.5*	20(K)	9000	130	8190	130
315/80R22.5	22(65MPH)	10000	130	9090	130
385/65R22.5	18(J)	9910	130	N/A	N/A
425/65R22.5	20(L)	11350	120	N/A	N/A
445/65R22.5	20(L)	12300	120	N/A	N/A
12.00R24	18(J)	9370	120	8540	110
12.00R24	20(L)	9920	120	8820	120
11R24.5*	14(G)	6430	105	5640	95
11R24.5*	16(H)	7200	120	6320	110
285/75R24.5	14(G)	6175	110	5675	100
10R17.5	16(H)	4675	110	4410	110
235/75R17.5	16(H)	6010	125	5680	125

*Denotes certain patterns with different max load/max pressure values. Check data book for exact amounts.

SPEED SYMBOLS

SPEED SYMBOL	SPEED (KM/H)	SPEED (MPH)	SPEED SYMBOL	SPEED (KM/H)	SPEED (MPH)
A1	5	3	K	110	68
A2	10	6	L	120	75
A3	15	9	M	130	81
A4	20	12	N	140	87
A5	25	16	P	150	94
A6	30	19	Q	160	100
A7	35	22	R	170	106
A8	40	25	S	180	112
B	50	31	T	190	118
C	60	37	U	200	124
D	65	40	H	210	130
E	70	43	V	240	149
F	80	50	W	270	168
G	90	56	Y	300	186
J	100	62		Above 300	Above 186

ZR



DUAL MATCHING AND SPACING

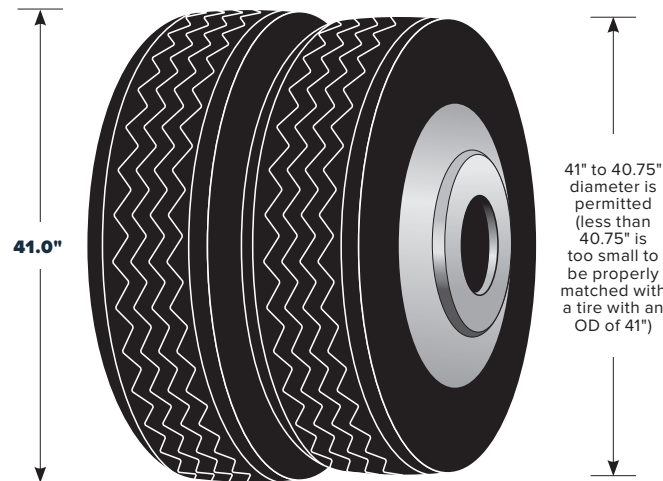
DUAL MATCHING

When putting tires in dual assemblies, tires should be matched with design and dimensional tolerances in mind. Bias ply tires should not be matched with radials, and tires with a difference of ¼" should not be matched together. Also do not use different rim widths in dual applications.

Mismatched tires may result in mechanical problems, rapid wear, abnormal/irregular wear, and premature tire failure. When improperly matched, one tire will work harder than another which may also lead to sudden air loss.

DUAL MATCHING LIMITS

TIRE CONSTRUCTION	DIAMETER	CIRCUMFERENCE
Radial	0 to ¼"	0 to ¾"



Tires within ¼" diameter are permitted. Diameters greater than ¼" is too great to be properly matched.
Each ½" OD = 1.56" of difference in circumference.

MEDIUM TRUCK APPROVED RIM WIDTH AND MINIMUM DUAL SPACING

TIRE SIZE	APPROVED RIM WIDTH	MINIMUM DUAL SPACING*
TUBE-TYPE		
11.00R24	8.5, 8.50VM, 8.0 , 7.5	13.2
12.00R24	9.0, 8.5 , 8.50VM, 8.0	14.1
TUBELESS		
9R17.5HC	6.75HC	10.3
215/75R17.5	6.00HC , 6.75HC	9.3
245/70R17.5	6.75 , 7.50	10.6
8R19.5	5.25, 6.00 , 6.00RW, 6.75, 6.75RW	9.1
9R22.5	6.00, 6.75 , 7.50	10.3
10R22.5	6.75, 7.50 , 8.25	11.4
11R22.5	7.50, 8.25	12.5
12R22.5	8.25, 9.00	13.5
225/70R19.5	6.00, 6.00RW, 6.75 , 6.75RW	10.0
245/70R19.5	6.75, 6.75RW, 7.50 , 7.50RW	11.0
265/70R19.5	7.50 , 7.50RW, 8.25, 8.25RW	11.6
285/70R19.5	7.50, 8.25 , 9.00	12.5
305/70R19.5	9.00 , 8.25, 8.25RW	13.5
445/65R19.5	13.00 , 14.00	N/A
245/75R22.5	6.75, 7.50	11.0
255/70R22.5	7.50 , 8.25	11.3
265/75R22.5	7.50 , 8.25	11.6
275/70R22.5	7.50, 8.25 , 9.00	12.2
295/80R22.5	8.25, 9.00	13.2
295/75R22.5	8.25, 9.00	13.2
315/80R22.5**	8.25, 9.00, 9.75	13.8
385/65R22.5	11.75 , 12.25	N/A
425/65R22.5	11.75, 12.25 , 13.00	N/A
445/50R22.5	14.00	N/A
445/65R22.5	13.00 , 12.25, 14.00	N/A
11R24.5	7.50, 8.25	12.5
12R24.5	8.25, 9.00	13.5
285/75R24.5	8.25	12.5

The listed Minimum Dual Spacing is for the rim which the tire was specifically designed for. If a different rim is being used, the Minimum Dual Spacing must be adjusted as follows: Overall widths and new tire section widths will be changed 0.10" for each 0.25" change in rim width. Use only alternate rims when the recommended rims cannot be used.

Design Rim Width shown in **boldface** type

* Minimum Dual Spacing is listed for the design rim width. If design rim not used Minimum Dual Spacing must be adjusted per note 1 (below) for other rim widths.

** 8.25-rim may be used if tire load is limited to 8,000 lb single and 7,610 lb dual @ 120 psi. The minimum dual spacing for 8.25-rim is 13.2". Do not exceed manufacturer's recommended maximum load and inflation.

Notes:

- New tire section widths and overall widths will change 0.10" for each 0.25" change in rim width.
- Use alternate rims only when recommended rims cannot be used.
- Do not use different rim widths in dual applications.

LOAD INFLATION CHART

To find the correct load and inflation information on this table, first locate your tire size. Match the sidewall markings on your tire to the table with the same sidewall markings information. If for any reason the tire sidewall markings don't match the information on the table, contact your Double Coin dealer to get the proper load and inflation information.

Load and inflation standards can change, and Double Coin regularly revises its information to reflect these modifications. What is printed may not be the current inflation and load specifications.

Always adhere to the wheel manufacturer's maximum air pressure limits.

TIRE LOAD LIMITS (KG/LB) AT VARIOUS COLD INFLATION PRESSURES (KPA/PSI)																									
TIRE SIZE		KPA	480		520		550		590		620		660		690		720		760		790		830		
			PSI	70	75	80	85	90	95	100	105	110	115	120											
8R19.5	DUAL	KG	1120	1170	1215(D)	115	1260	1310	1360(E)	119	1410	1460	1500(F)	122											
		LB	2460	2570	2680(D)		2785	2890	3000(E)		3100	3200	3305(F)												
	SINGLE	KG	1150	1220	1285(D)	117	1340	1400	1450(E)	121	1500	1550	1600(F)	124											
		LB	2540	2680	2835(D)		2955	3075	3195(E)		3305	3415	3525(F)												
9R22.5	DUAL	KG	1480	1550	1610	127	1670	1750(E)	127	1820	1890	1950(F)	131	2010	2070	2120(G)	134								
		LB	3270	3410	3550		3690	3860(E)		4005	4150	4300(F)		4425	4550	4675(G)									
	SINGLE	KG	1530	1610	1690	129	1760	1850(E)	129	1920	1990	2060(F)	133	2120	2180	2240(G)	136								
		LB	3370	3560	3730		3890	4080(E)		4235	4390	4540(F)		4675	4810	4940(G)									
10R22.5	DUAL	KG	1750	1830	1910	132	2000(E)	132	2080	2160	2240(F)	136	2300	2360	2430(G)	139									
		LB	3860	4045	4230		4410(E)		4585	4760	4940(F)		5075	5210	5355(G)										
	SINGLE	KG	1850	1940	2030	134	2120(E)	134	2200	2280	2360(F)	138	2430	2500	2575(G)	141									
		LB	4080	4280	4480		4675(E)		4850	5025	5205(F)		5360	5515	5674(G)										
11R22.5	DUAL	KG	1990	2080	2160	138	2250	2360(F)	138	2460	2560	2650(G)	142	2680	2710	2725(H)	143								
		LB	4380	4580	4760		4950	5205(F)		5415	5615	5840(G)		5895	5950	6005(H)									
	SINGLE	KG	2050	2160	2260	140	2370	2500(F)	140	2600	2700	2800(G)	144	2870	2940	3000(H)	146								
		LB	4530	4770	4990		5520	5510(F)		5730	5950	6175(G)		6320	6465	6610(H)									
11R24.5	DUAL	KG	2110	2210	2300	140	2390	2500(F)	140	2580	2660	2725(G)	143	2820	2910	3000(H)	146								
		LB	4660	4870	5070		5260	5510(F)		5675	5840	6005(G)		6205	6405	6610(H)									
	SINGLE	KG	2190	2300	2410	142	2520	2650(F)	142	2770	2890	3000(G)	146	3080	3160	3250(H)	149								
		LB	4820	5070	5310		5550	5840(F)		6095	6350	6610(G)		6790	6970	7160(H)									
12R22.5	DUAL	KG	2170	2260	2350	141	2440	2575(F)	141	2630	2680	2725(G)	143	2840	2960	3075(H)	147								
		LB	4780	4990	5190		5390	5675(F)		5785	5895	6005(G)		6265	6225	6780(H)									
	SINGLE	KG	2240	2360	2470	143	2580	2725(F)	143	2820	2910	3000(G)	146	3120	3240	3350(H)	150								
		LB	4940	5200	5450		5690	6005(F)		6205	6405	6610(G)		6870	7130	7390(H)									
8.25R15TR	DUAL	KG	1220	1270	1330	1380	1380	1430	1480	1520	1600(F)	124	1650	1700	1750(G)	127									
		LB	2700	2810	2930		3040	3150		3260	3360		3525(F)	3635	3745		3860(G)								
	SINGLE	KG	1260	1330	1400	1450	1450	1520	1570	1630	1700(F)	126	1750	1800	1850(G)	129									
		LB	2780	2930	3080		3200	3340		3470	3590		3750(F)	3860	3970		4080(G)								
8.25R20	DUAL	KG	1480	1550	1610	127	1670	1750(E)	127	1820	1890	1950(F)	131	2010	2070	2120(G)	134								
		LB	3270	3410	3550		3690	3860(E)		4005	4150	4300(F)		4425	4550	4675(G)									
	SINGLE	KG	1530	1610	1690	129	1760	1850(E)	129	1920	1990	2060(F)	133	2120	2180	2240(G)	136								
		LB	3370	3560	3730		3890	4080(E)		4235	4390	4540(F)		4675	4810	4940(G)									
9.00R20	DUAL	KG	1750(D)	127	1830	1910	2000(E)	132	2080	2160	2240(F)	136	2300	2360	2430(G)	139									
		LB	3860(D)		4045		4230		4410(E)	4595	4760		4940(F)	5080	5220		5355(G)								
	SINGLE	KG	1850(D)	129	1940	2030	2120(F)	134	2200	2280	2360	138	2430	2500	2575(G)	114									
		LB	4080(D)		4280		4480		4675(E)	4850	5025		5205(F)	5360	5515		5675(G)								
10.00R15TR	DUAL	KG	1660	1740	1810	131	1870	1950(F)	131	2030	2110	2180(G)	135	2260	2340	2430(H)	139								
		LB	3660	3830	3980		4130	4300(F)		4470	4640	4805(G)		4990	5175	5355(H)									
	SINGLE	KG	1710	1810	1890	133	1980	2060(F)	133	2140	2220	2300(G)	137	2390	2480	2575(H)	141								
		LB	3780	3980	4170		4370	4540(F)		4715	4890	5070(G)		5270	5470	5675(H)									

Note:
Letter in parentheses denote Load Range for which Bold Face loads are maximum.
International Load Index numbers are shown after Load Range.

Important:
Always use approved tire and rim combinations for diameters and contours.

LOAD INFLATION CHART

TIRE LOAD LIMITS (KG/LB) AT VARIOUS COLD INFLATION PRESSURES (KPA/PSI)																										
TIRE SIZE		KPA	480		520		550		590		620		660		690		720		760		790		830			
			PSI	70	75	80	85	90	95	100	105	110	115	120												
10.00R20	DUAL	KG	1990	2080	2160	2550	2360(F)	138	2460	2560	2650(G)	142	2680	2710	2725(H)	143	2840	2960	3075(H)	147	3075(H)	147	3075(H)	147	3075(H)	147
	LB	4380	4580	4760	4950	5205(F)	5415		5625	5840(G)	5895		5950	6005(H)	6005(H)		6005(H)									
10.00R20	SINGLE	KG	2050	2160	2260	2370	2500(F)	140	2600	2700	2800(G)	144	2870	2940	3000(H)	146	3120	3240	3350(H)	150	3350(H)	150	3350(H)	150	3350(H)	150
	LB	4530	4770	4990	5220	5510(F)	5730		5950	6175(G)	6320		6465	6610(H)	6610(H)		6610(H)									
11.00R20	DUAL	KG	2170	2260	2350	2440	2575(F)	141	2630	2680	2725(G)	143	2840	2960	3075(H)	147	3075(H)	3075(H)	3075(H)	147	3075(H)	147	3075(H)	147	3075(H)	147
	LB	4780	4990	5190	5390	5675(F)	5785		5895	6005(G)	6265		6525	6780(H)	6780(H)		6780(H)									
11.00R20	SINGLE	KG	2240	2360	2470	2580	2725(F)	143	2820	2910	3000(G)	146	3120	3240	3350(H)	150	3350(H)	3350(H)	3350(H)	150	3350(H)	150	3350(H)	150	3350(H)	150
	LB	4940	5200	5450	5690	6005(F)	6205		6405	6610(G)	6870		7130	7390(H)	7390(H)		7390(H)									
12.00R20	DUAL	KG	2470	2580	2680	2790	2880	3000(G)	146	3080	3080	3160	140	3350	3450	3550(H)	152	3650	3750(J)	154	3750(J)	154	3750(J)	154	3750(J)	154
	LB	5440	5680	5910	6140	6360	6610(G)	6790		6970	7160(H)	7390(H)		7610(J)	7610(J)	7610(J)										
12.00R20	SINGLE	KG	2550	2690	2810	2940	3060	3250(G)	149	3350	3450	3550(H)	152	3650	3750(J)	154	3750(J)	3750(J)	3750(J)	154	3750(J)	154	3750(J)	154	3750(J)	154
	LB	5620	5920	6200	6480	6740	7160(G)	7380		7600	7830(H)	8050		8270(J)	8270(J)		8270(J)									
12.00R24	DUAL	KG	2780	2860	3020	3140	3250	3350(G)	150	3450	3450	3550	153	3760	3875(J)	155	3875(J)	3875(J)	3875(J)	155	3875(J)	155	3875(J)	155	3875(J)	155
	LB	6120	6390	6650	6910	7160	7390(G)	7610		7830	8050(H)	8300		8540(J)	8540(J)		8540(J)									
12.00R24	SINGLE	KG	2870	3020	3170	3300	3440	3650(G)	153	3770	3890	4000(H)	156	4130	4250(J)	158	4250(J)	4250(J)	4250(J)	158	4250(J)	158	4250(J)	158	4250(J)	158
	LB	6330	6660	6980	7280	7580	8050(G)	8310		8570	8820(H)	9100		9370(J)	9370(J)		9370(J)									

TIRE LOAD LIMITS (KG/LB) AT VARIOUS COLD INFLATION PRESSURES (KPA/PSI)																										
TIRE SIZE		KPA	480		520		550		590		620		660		690		720		760		790		830			
			PSI	70	75	80	85	90	95	100	105	110	115	120												
295/75R22.5	DUAL	KG	1860	1950	2060	2130	2220	2300(F)	137	2390	2470	2575(G)	141	2630	2725(H)	143	2725(H)	2725(H)	2725(H)	143	2725(H)	143	2725(H)	143	2725(H)	143
	LB	4095	4300	4540	4690	4885	5070(F)	5260		5440	5675(G)	5795		6005(H)	6005(H)		6005(H)									
295/75R22.5	SINGLE	KG	2040	2140	2240	2340	2440	2500(F)	140	2620	2710	2800(G)	144	2890	3000(H)	146	3000(H)	3000(H)	3000(H)	146	3000(H)	146	3000(H)	146	3000(H)	146
	LB	4500	4725	4940	5155	5370	5510(F)	5780		5980	6175(G)	6370		6610(H)	6610(H)		6610(H)									

TIRE LOAD LIMITS (KG/LB) AT VARIOUS COLD INFLATION PRESSURES (KPA/PSI)																										
TIRE SIZE		KPA	520		550		590		620		660		690		720		760		790		830		860		900	
			PSI	75	80	85	90	95	100	105	110	115	120	125	130											
315/80R22.5	DUAL	KG	2420	2575	2650	2750	2900(G)	145	2970	3070	3150(H)	148	3270	3450(J)	151	3590	3750(L)	154	3750(L)	154	3750(L)	154	3750(L)	154	3750(L)	154
	LB	5345	5675	5840	6070	6395(G)	6545		6770	6940(H)	7210		7610(J)	7910		8270(L)	8270(L)		8270(L)							
315/80R22.5	SINGLE	KG	2660	2800	2910	3030	3150(G)	148	3260	3370	3450(H)	151	3590	3750(J)	154	3940	4125(L)	157	4125(L)	157	4125(L)	157	4125(L)	157	4125(L)	157
	LB	5875	6175	6415	6670	6940(G)	7190		7440	7610(H)	7920		8270(J)	8690		9090(L)	9090(L)									
285/75R24.5	DUAL	KG	1970	2060	2150	2240	2360(F)	138	2410	2490	2575(G)	141	2660	2800(H)	144	2800(H)	2800(H)	2800(H)	144	2800(H)	144	2800(H)	144	2800(H)	144	
	LB	4340	4540	4740	4930	5205(F)	5310		5495	5675(G)	5860		6175(H)	6175(H)		6175(H)										
285/75R24.5	SINGLE	KG	2160	2240	2360	2460	2575(F)	141	2650	2740	2800(G)	144	2920	3075(H)	147	3075(H)	3075(H)	3075(H)	147	3075(H)	147	3075(H)	147	3075(H)	147	
	LB	4770	4940	5210	5450	5675(F)	5835		6040	6175(G)	6440		6780(H)	6780(H)		6780(H)										

Note:
Letter in parentheses denote Load Range for which Bold Face loads are maximum.
International Load Index numbers are shown after Load Range.

Important:
Always use approved tire and rim combinations for diameters and contours.

LOAD INFLATION CHART

TIRE LOAD LIMITS (KG/LB) AT VARIOUS COLD INFLATION PRESSURES (KPA/PSI)																														
TIRE SIZE	KPA	PSI	450		480		520		550		590		620		660		690		720		760		790		830					
			65	70	75	80	85	90	95	100	105	110	115	120																
225/70R19.5	DUAL	KG	1180(D)	1230	1300	1360(E)	1410	1470	1550(F)	1580	1640	1700(G)	1760	1820	1880	1940	2000	2060	2120	2180	2240	2300	2360	2420	2480	2540	2600	2660		
	SINGLE	LB	2600(D)	2720	2860	3000(E)	3115	3245	3415(F)	3490	3615	3750(G)	3870	4000	4120	4240	4360	4480	4600	4720	4840	4960	5080	5200	5320	5440	5560	5680	5800	
245/70R19.5	DUAL	KG	1320	1390	1460	1550	1590	1660	1750(F)	1790	1850	1950(G)	1990	2050	2110	2170	2230	2290	2350	2410	2470	2530	2590	2650	2710	2770	2830	2890	2950	
	SINGLE	LB	2910	3070	3220	3415	3515	3655	3860(F)	3940	4075	4300(G)	4380	4515	4650	4785	4920	5055	5190	5325	5460	5595	5730	5865	6000	6135	6270	6405	6540	6675
265/70R19.5	DUAL	KG	1450	1560	1640	1700	1780	1860	1950	2000	2000	2120(G)	2160	2200	2240	2280	2320	2360	2400	2440	2480	2520	2560	2600	2640	2680	2720	2760	2800	
	SINGLE	LB	3195	3430	3600	3750	3930	4095	4300	4405	4405	4675(G)	4740	4810	4880	4950	5020	5090	5160	5230	5300	5370	5440	5510	5580	5650	5720	5790	5860	5930
445/50R22.5	SINGLE	KG	2800	2980	3150	3320	3480	3640	3810	3970	4120	4250(J)	4370	4490	4610	4730	4850	4970	5090	5210	5330	5450	5570	5690	5810	5930	6050	6170	6290	
385/65R22.5	SINGLE	LB	6175	6570	6940	7310	7680	8030	8390	8740	9090	9370(J)	9650	9930	10210	10490	10770	11050	11330	11610	11890	12170	12450	12730	13010	13290	13570	13850	14130	14410
425/65R22.5	SINGLE	KG	2750	2880	3060	3150	3350	3470	3650	3740	3850	4000	4100	4250	4350	4450	4580	4680	4820	4920	5060	5160	5260	5360	5460	5560	5660	5760	5860	
425/65R22.5	SINGLE	LB	6060	6380	6720	6940	7350	7650	8050	8230	8510	8820	9050	9280	9510	9740	10000	10260	10520	10780	11040	11300	11560	11820	12080	12340	12600	12860	13120	13380
445/65R22.5	SINGLE	KG	3270	3430	3640	3750	3980	4130	4250	4440	4580	4750(J)	4880	5020	5160	5300	5440	5580	5720	5860	6000	6140	6280	6420	6560	6700	6840	6980	7120	
445/65R22.5	SINGLE	LB	7210	7590	7990	8270	8740	9100	9370	9790	10100	10500(J)	10700	11000	11300	11600	11900	12200	12500	12800	13100	13400	13700	14000	14300	14600	14900	15200	15500	15800
255/70R22.5	DUAL	KG	3540	3720	3950	4125	4320	4470	4620(H)	4820	4960	5150	5290	5480	5620	5810	5950	6140	6280	6470	6610	6800	6940	7130	7270	7460	7600	7790	7930	
	SINGLE	LB	7800	8230	8660	9090	9480	9870	10200(H)	10600	11000	11400	11700	12100	12500	12900	13300	13700	14100	14500	14900	15300	15700	16100	16500	16900	17300	17700	18100	18500
255/70R22.5	DUAL	KG	1550	1630	1710	1800	1860	1940	2000	2020	2090	2120(G)	2140	2230	2260	2300	2330	2360	2390	2420	2450	2480	2510	2540	2570	2600	2630	2660	2690	
	SINGLE	LB	3415	3585	3765	3970	4110	4275	4410	4440	4555	4670	4790	4910	5030	5150	5270	5390	5510	5630	5750	5870	6000	6120	6240	6360	6480	6600	6720	6840
255/70R22.5	DUAL	KG	1650	1730	1820	1900	1980	2060	2120	2220	2300	2360(G)	2440	2480	2520	2560	2600	2640	2680	2720	2760	2800	2840	2880	2920	2960	3000	3040	3080	
	SINGLE	LB	3640	3815	4005	4190	4370	4550	4675	4895	5065	5205(G)	5345	5485	5625	5765	5905	6045	6185	6325	6465	6605	6745	6885	7025	7165	7305	7445	7585	7725

TIRE LOAD LIMITS (KG/LB) AT VARIOUS COLD INFLATION PRESSURES (KPA/PSI)																													
TIRE SIZE	KPA	PSI	590		620		660		690		720		760		790		830		860		900		930						
			85	90	95	100	105	110	115	120	125	130	135																
8R17.5HC	DUAL	KG	1160	1200	1250(E)	1300	1350	1400(F)	1450	1500	1550	1600	1650	1700	1750	1800	1850	1900	1950	2000	2050	2100	2150	2200	2250	2300	2350	2400	
	SINGLE	LB	2550	2640	2755(E)	2865	2975	3085(F)	3195	3305	3415	3525	3635	3745	3855	3965	4075	4185	4295	4405	4515	4625	4735	4845	4955	5065	5175	5285	5395
10R17.5HC	DUAL	KG	1650(E)	1720	1790	1850(F)	1920	1990	2060(G)	2130	2200	2270	2340	2410	2480	2550	2620	2690	2760	2830	2900	2970	3040	3110	3180	3250	3320	3390	3460
	SINGLE	LB	3640(E)	3785	3930	4080(F)	4235	4390	4540(G)	4690	4840	4990	5140	5290	5440	5590	5740	5890	6040	6190	6340	6490	6640	6790	6940	7090	7240	7390	7540
10R17.5HC	DUAL	KG	1750(E)	1820	1890	1950(F)	2030	2110	2180(G)	2260	2340	2420	2500	2580	2660	2740	2820	2900	2980	3060	3140	3220	3300	3380	3460	3540	3620	3700	3780
	SINGLE	LB	3860(E)	4005	4150	4300(F)	4440	4590	4740(G)	4890	5040	5190	5340	5490	5640	5790	5940	6090	6240	6390	6540	6690	6840	6990	7140	7290	7440	7590	7740

Note:
Letter in parentheses denote Load Range for which Bold Face loads are maximum.
International Load Index numbers are shown after Load Range.

Important:
Always use approved tire and rim combinations for diameters and contours.

STATIC & LOW SPEED LOAD & PRESSURE COEFFICIENTS

TRA (THE TIRE AND RIM ASSOCIATION, INC.) STANDARDS

These tables apply to tires only. Consult wheel manufacturer for wheel load and inflation capacities. Do not exceed loads or pressure limits of the wheel without

permission of the component manufacturer. Exceeding the legal speed limit is neither recommended nor endorsed.

LOAD LIMITS AT VARIOUS SPEEDS FOR RADIAL PLY TRUCK-BUS TIRES USED ON IMPROVED SURFACES.⁽¹⁾

METRIC AND WIDE BASE TIRES

The service load and minimum (cold) inflation must comply with the following limitations unless a speed restriction is indicated on the tire.*

SPEED RANGE (MPH)	% LOAD CHANGE	INFLATION PRESSURE CHANGE
41 thru 50	+7%	No increase
31 thru 40	+9%	No increase
21 thru 30	+12%	+10 psi
11 thru 20	+17%	+15 psi
6 thru 10	+25%	+20 psi
2.6 thru 5	+45%	+20 psi
Creep thru 2.5	+55%	+20 psi
Creep ⁽²⁾	+75%	+30 psi
Stationary	+105%	+30 psi

CONVENTIONAL TIRES

The service load and minimum (cold) inflation must comply with the following limitations unless a speed restriction is indicated on the tire.*

SPEED RANGE (MPH)	% LOAD CHANGE	INFLATION PRESSURE CHANGE
41 thru 50	+9%	No increase
31 thru 40	+16%	No increase
21 thru 30	+24%	+10 psi
11 thru 20	+32%	+15 psi
6 thru 10 ⁽²⁾	+60%	+30 psi
2.6 thru 5 ⁽²⁾	+85%	+30 psi
Creep thru 2.5 ⁽²⁾	+115%	+30 psi
Creep ^{(2) (3)}	+140%	+40 psi
Stationary ⁽²⁾	+185%	+40 psi

LOAD LIMITS AT VARIOUS SPEEDS FOR RADIAL PLY TRUCK-BUS TIRES, RATED AT 75 MPH OR ABOVE, USED ON IMPROVED SURFACES.⁽¹⁾

METRIC AND WIDE BASE TIRES

SPEED RANGE (MPH)	% LOAD CHANGE	INFLATION PRESSURE CHANGE
41 thru 50	+7%	No increase
31 thru 40	+9%	No increase
21 thru 30	+12%	+10 psi
11 thru 20	+17%	+15 psi
6 thru 10	+25%	+20 psi
2.6 thru 5	+45%	+20 psi
Creep thru 2.5	+55%	+20 psi
Creep ⁽²⁾	+75%	+30 psi
Stationary	+105%	+30 psi

CONVENTIONAL TIRES

SPEED RANGE (MPH)	% LOAD CHANGE	INFLATION PRESSURE CHANGE
41 thru 50	+9%	No increase
31 thru 40	+16%	No increase
21 thru 30	+24%	+10 psi
11 thru 20	+32%	+15 psi
6 thru 10 ⁽²⁾	+60%	+30 psi
2.6 thru 5 ⁽²⁾	+85%	+30 psi
Creep thru 2.5 ⁽²⁾	+115%	+30 psi
Creep ^{(2) (3)}	+140%	+40 psi
Stationary ⁽³⁾	+185%	+40 psi

- * Exceeding the legal speed limit is neither recommended or endorsed.
 (1) These load and inflation changes are only required when exceeding the tire manufacturer's rated speed for the tire.
 (2) Apply these increases to dual loads and inflation pressures.
 (3) Creep — Motion for not over 200 feet in a 30-minute period.

Notes:

- For bias ply tires please consult the TRA Year Book.
- The inflation pressures shown in the referenced tables are minimum cold pressures for the various loads listed. Higher pressures should be used as follows:
 - When required by the above speed/load table.
 - When higher pressures are desirable to obtain improved operating performance. For speeds above 20 mph, the combined increases of A and B should not exceed 20 psi above the inflation specified for the maximum load of the tire.
- Load limits at various speeds for:
 - Tires used in highway service at restricted speed. Mining and logging tires used in intermittent highway service.

LIMITED MANUFACTURER'S WARRANTY

LIMITED WARRANTY

Double Coin Radial TBR (Truck and Bus Radial) Tire Limited Manufacturers Warranty January 1, 2017

TO OBTAIN AN ADJUSTMENT

- You must present the tire to be adjusted to a current Double Coin Commercial TBR Tire Dealer. (Please consult your telephone directory for locations or visit our dealer locator on our website at www.doublecointires.com). Tires replaced on an adjustment basis become the property of Double Coin.
- You must pay for taxes, fees or any additional services you order at the time of adjustment.
- No claim will be recognized unless submitted on a Double Coin claim form (supplied by the Double Coin Commercial TBR Tire Dealer), completely filled out and signed by you, the owner of the tire presented for adjustment, or your authorized agent.

FOR SERVICE ASSISTANCE OR INFORMATION

- First contact the nearest Authorized Double Coin Commercial TBR Tire Dealer.
- If additional assistance is required:
 - Visit our website at www.doublecointires.com.
 - E-mail The Double Coin Customer Relations Department at info@doublecointires.com or
 - Write to: Double Coin Customer Assistance Service Department
406 E. Huntington Drive, Suite 200
Monrovia, CA 91016

WHO IS ELIGIBLE FOR WARRANTY COVERAGE

You are eligible for the benefits of this warranty if you meet all the following criteria:

- You are the owner or authorized agent of the owner of new Double Coin Light Truck Radial or radial medium TBR tires.
- Your tires bear Department of Transportation (DOT) prescribed tire identification numbers and are not branded "NA" (Not Adjustable).
- Your Double Coin TBR tires have been used only on the vehicle on which they were originally installed according to the vehicle manufacturers or Double Coin's recommendations.
- Your tires were purchased on or after January 1, 2007.

WHAT IS COVERED UNDER THIS WARRANTY AND FOR HOW LONG

1. 50% FREE REPLACEMENT WARRANTY

If any Double Coin TBR tire covered by this warranty becomes unserviceable due to a defect in workmanship or material during the first 50% of the original tread life (calculated by subtracting one-half (1/2) the difference between the original new tire tread depth and 2/32" from the original new tire tread depth), then Double Coin will reimburse the cost of a replacement Double Coin TBR tire to you, plus the cost of mounting and balancing as follows:

- The defective Double Coin tire must be replaced with a comparable new Double Coin tire by an authorized Double Coin TBR tire dealer.
- Costs of mounting and balancing will be refunded up to a maximum of \$16.00 per tire.
- Applicable taxes and fees will be the responsibility of the owner of the vehicle.
- 50% free replacement applies to first quality tires only. Blemished, Non-Adjustable (stamped on tire), retreads or road hazard tires are specifically excluded.

2. PRORATED TIRE REPLACEMENT

Double Coin TBR tires covered by this warranty that become unserviceable due to a defect in workmanship or material during the life of the original usable tread (down to 2/32" remaining usable tread), will be reimbursed to the owner on a prorated basis. You pay only for the mounting, balancing, taxes and fees.

HOW TO CALCULATE THE PRORATED AMOUNT

The replacement price will be calculated by multiplying the current Double Coin "predetermined price for adjustment" or current advertised selling price at the adjustment location (whichever is lower) by the percentage of usable original tread that has been worn

off at the time of adjustment. You pay for mounting, balancing, and amount equal to the full current Federal Excise Tax and any other applicable taxes and fees for the comparable new Double Coin replacement tire.

PRORATED REIMBURSEMENT EXAMPLE

If your disabled tire had an original 16/32" of usable tread depth and is worn to 8/32" of usable tread remaining you have used 50% and therefore must pay 50% of the predetermined price for adjustment or advertised selling price of a comparable tire, plus an amount equal to the full current Federal Excise Tax applicable to the comparable new replacement tire at the time of adjustment. If the price of the comparable tire is \$400.00, the cost to you would be \$200.00 plus Federal Excise Tax, mounting, balancing and any other applicable taxes.

DEFINITION OF A COMPARABLE TIRE

A "comparable" new Double Coin tire may either be the same line of tire or, in the event that the same tire is not available, a tire of the same basic construction and quality with a different sidewall or tread configuration. If a higher priced tire is accepted as replacement, the difference in price will be at an additional charge to you. Any replacement tire provided pursuant to this warranty will be covered by the Double Coin warranty in effect at the time of replacement.

WHAT THIS WARRANTY DOES NOT COVER

Irregular wear or tire damage due to:

- Road hazards (including punctures, cuts, snags, impact breaks, etc.)
- Wreck, collision, or fire.
- Improper inflation, overloading, high speed spinup, misapplication, misuse, negligence, racing, chain damage, or improper mounting or demounting.
- Mechanical condition of the vehicle.
- Ride disturbance after the first 2/32" treadwear or due to damaged wheels or any vehicle condition.
- Any tire intentionally altered after leaving a factory producing Double Coin tires to change its appearance (example: white inlay on a black tire).
- Tires with weather cracking which were manufactured five (5) or more years prior to presentation (7 years on OptiGreen SmartWay[®]-verified products) are not covered.
- This limited warranty is applicable only in the United States, Canada, Mexico and Central America and any tire used or equipped on a vehicle registered or operated outside the U.S., Canada, Mexico and Central America are not covered by this warranty.
- Tire branded or marked "Non-Adjustable" (N/A) or "Blemished" (Blem), or previously adjusted.

Failure, damage, or irregular wear due to:

- Accident or vandalism, improper misalignment, wheel imbalance, faulty shocks or brakes;
- Mechanical condition of vehicle, including misalignment, wheel imbalance, faulty shocks or brakes;
- Misapplication of tire, use of improper inner tube;
- Alteration of the tire or addition of alien material or transfer from one vehicle to another;
- TBR tire failed due to faulty retreading or material.
- Cost of mounting and balancing service except as noted above.
- Loss of time or use, inconvenience, or any incidental or consequential damages.
- Material added to a tire after leaving a factory producing Double Coin tires: (example: tire fillers, sealants, or balancing substances). If the added material is the cause of the tire being removed from service, the tire will not be adjusted.
- Loss of time, inconvenience, loss of use of vehicle, incidental or consequential damage.

DOUBLE COIN 7 YEAR CASING WARRANTY

Effective April 19, 2017 all Double Coin casings with a DOT manufactured date as of the 1st week in January 2017 will be warranted for workmanship and materials at 100% through the first, second and third retread for a period of seven years from the manufactured date indicated in the DOT #. If an authorized Double Coin dealer examines the casing and finds such a defect Double Coin will reimburse the owner for the casing according to the following schedule:

DOUBLE COIN CASING VALUES	
DOUBLE COIN LIGHT TBR	CASING VALUES (DOUBLE COIN)
8, 8.5R17.5	\$15.00
8R19.5	\$15.00
TUBELESS	
9, 10, 11R17.5	\$20.00
9, 10R22.5	\$40.00
11R22.5, 24.5	\$65.00, \$70.00
12R22.5, 24.5	\$70.00
TUBELESS LOW PROFILE	
215, 235/75R17.5	\$15.00
225, 245, 265	\$30.00
245, 265/75R22.5	\$15.00
255, 275/70R22.5	\$65.00
295/75R22.5	\$65.00
295/80R22.5	\$65.00
285/75R24.5	\$75.00
315/80R22.5	\$65.00
385, 425, 445/65R22.5	\$65.00
TUBE-TYPE	
10.00R20	\$50.00

YOUR LEGAL RIGHTS

Some states do not allow the exclusion or limitation of incidental or consequential damages, so the above limitation or exclusions may not apply to you. No representative or dealer has authority to make any representation, promise, or agreement on behalf of Double Coin, except as stated herein. Any tire, no matter how well constructed, may fail in service or otherwise become unserviceable due to conditions beyond the control of the manufacturer. Under no circumstances is this a representation that a tire failure cannot occur. This warranty gives you specific legal rights, and you may also have other rights that vary from state to state. This limited warranty is applicable only in the United States, Canada, Mexico and Central America.

END OF WARRANTY

A tire has delivered its full original tread life and the new tire coverage ends when the tread wear indicators become visible or 5 years from the date of manufacture as indicated by the DOT # or the date of purchase (proof of purchase required is the customer's invoice). Without proof of purchase the DOT date of manufacture will be used. Double Coin casings will continue to be warranted beyond the new tire coverage for a period of 7 years from the DOT date of manufacture or the date of purchase as indicated above.

SAFETY WARNINGS

Serious injury or property damage may result from:

- TIRE FAILURE DUE TO UNDERINFLATION/OVERLOADING. Follow the owner's manual or tire placard in vehicle.
- TIRE FAILURE DUE TO EXCESSIVE HIGH SPEED. Follow the owner's manual or tire placard in vehicle.
- EXPLOSION OF TIRE/RIM ASSEMBLY DUE TO IMPROPER MOUNTING. Only specially trained persons should mount tires.
- FAILURE TO MOUNT RADIAL TIRES ON APPROVED RIMS
- FAILURE TO DEFLATE SINGLE OR DUAL ASSEMBLIES COMPLETELY BEFORE DISMOUNTING.
- TIRE SPINNING. On slippery surfaces such as snow, mud, ice, etc., do not spin tires in excess of 35 mph (55 km/h), as indicated on the speedometer. Personal injury and severe damage may result from excessive wheel spinning, including tire disintegration or axle failure.

DOUBLE COIN

406 E. Huntington Drive, Suite 200
Monrovia, CA 91016
1-888-226-5250
www.DoubleCoinTires.com

THE SMART MONEY IS ON



Double Coin commercial tires are distributed and marketed in the USA, Mexico, Central America, and Canada.

CMA, LLC Headquarters

406 E. Huntington Drive, Suite 200

Monrovia, CA 91016 USA

Tel: 1 (626) 301-9675 or 1 (888) 226-5250

Fax: 1 (626) 301-9579

www.DoubleCoinTires.com

Distribution Centers:

CMA Memphis, USA

4481 Distriplex Cove

Memphis, TN 38118

CMA Rancho Cucamonga, USA

9089 8th Street

Rancho Cucamonga, CA 91730

CMA de Mexico Warehouse, Mexico

Carretera Estatal 431 M 1+300 Nava 12 Sur

El Marques, Queretaro Mexico

CMA Central America, Costa Rica

Almacen Algefissa (Bond Whse)

Cementerio de Curridabat 200mt

Oeste, Curridabat, San Jose Costa Rica